


자연을 담은, 사람을 담은 행복한 생활공간을 만듭니다.  
*Nature, Human & Space*

# LX Z:In

고객상담실

 1544-1893

## 본사 및 지방 사업장

본사: 서울특별시 중구 후암로 98  
공장: 울산광역시 울주군 온양읍 덕망로 275

검색창에  을 입력해 보세요!

- \* 본 샘플북에 게재된 내용의 무단복제 및 사용을 금합니다.
- \* 본 샘플북에 수록된 컬러는 실제품과 차이가 있을 수 있습니다.
- \* 본 샘플북에 수록된 제품은 품질개선 및 성능향상 등을 위해 사전 예고 없이 변경될 수 있습니다.

## 주의사항

※ 주의사항은 반드시 읽어 주십시오.

**운반보관** - 충격에 약한 제품입니다. 취급 시 던지지 마십시오.

**시공시** - 시공 시 프라이머는 당사 지정품을 사용 바랍니다.  
- 지정품 이외 사용 시 하자가 발생할 수 있습니다.  
- 프라이머는 인체에 유해합니다. 냄새를 맡지 마십시오.

**유지관리 및 사용시** - 칼, 송곳 등 날카로운 물건에 찍히지 않게 주의하십시오.  
- 자외선에 의한 변색 염려가 있습니다.

베니프  
BENIF

2023  
-  
2024

 인테리어필름


LX Z:In

 LX하우시스

www.lxzin.com

# BENIF

## 베니프

 인테리어필름

LX Z:In



**Headquarters LX Hausys, Ltd** 98, Huam-ro, Jung-gu, Seoul, Korea, 04637(LG Seoul Station Building) / Email : lxinfo@lxhausys.com / www.lxhausys.com

#### SALES SUBSIDIARY

##### U.S.A (Atlanta)

LX Hausys America Inc.  
900 Circle 75 Pwky Suite#1500 Atlanta GA30339, U.S.A  
TEL : +1-678-486-8220

##### EUROPE (Frankfurt)

LX Hausys Europe GmbH  
Lyoner Str. 15 Atricom C6, D/60528 Frankfurt am Main, Germany  
TEL : +49-69-583029-0

##### RUSSIA (Moscow)

LX Hausys Rus, LLC  
Lesnaya Plaza 8th floor, 4, 4th Lesnoy pereulok, Moscow, 125047, Russia  
TEL : +7-495-663-39-58

##### INDIA (Gurgaon)

LX Hausys India Private Ltd.  
7F, Emmar MGF Digital Green, Tower B, Golf Course Ext. Road, Secotor 61,  
Gurgaon-122009, Haryana, India  
TEL : +91-124-421-2590

##### CANADA (Toronto)

LX Hausys Canada, Inc.  
20 Norelco Drive, North York, Ontario, M9L 2X6, Canada  
TEL : +1-905-660-4746

##### JAPAN (Tokyo)

LX Hausys Tokyo Branch  
100-0004 Tokyo Sankei Building 25F, 1-7-2 Otemachi,  
Chiyoda-ku, Tokyo, Japan  
TEL : +81-3-5299-4533

#### REPRESENTATIVE OFFICES

##### TURKIYE

TK Deco Yapı Teknolojileri Limited Şirketi  
Yeşilköy Mah. Atatürk Cad.  
Dünya Ticaret Merkezi B2 Blok 34149 Kat:8 No: 280 Bakırköy, İstanbul  
TEL : +90-212-285-11-01 / +90-535-104-11-91

##### TAIWAN

TAODE Enterprise Ltd.  
Rm. B2, 10F., No. 49, Sec. 3, Minsheng E.  
Rd., Zhongshan Dist., Taipei City 104483, Taiwan (R.O.C.)  
TEL : +886-2-3771370

##### THAILAND

CK Cooperation Co.,Ltd  
77/3 Village No.4, Bueng Kham Phroi Sub-District, Lam Luk Ka District,  
Pathum Thani Province 12150, Thailand  
TEL : +66-95-7982565

##### VIETNAM

TARA VIET NAM CONSULTING AND DEVELOPMENT.,LTD  
Room 302, Sunlight house building, 12 street 1,  
Tan Phu ward, District 7, Ho Chi Minh city, Viet Nam  
TEL : +84-28-36200047(Office) / +84-9762-10411(Mobile)

BENIF

2023  
-  
2024



Interior Film



www.lxhausys.com

BENIF



Interior Film



# Contents

Recommendation_추천	06
Dual_듀얼	12
Misty_미스티	16
Emboss_엠보스	18
Solid_솔리드	24
Metal_메탈	26
Classic Wood_클래식 우드	32
Big Wood_빅 우드	44
Premium Wood_프리미엄 우드	52
Wood_우드	62
Big Stone_빅 스톤	76
Stone_스톤	81
Stucco_스타코	85
Concrete / Mortar_콘크리트/모르타르	86
Marble_마블	88
Textile_텍스타일	90
Leather_레더	94
Specialty_스페셜티	96
Certification & Test Report_인증&성격서	98



LX하우스스 인테리어필름의 다양한 정보를 온라인에서 만나보세요.  
Discover various information about LX Hausys Interior Films online.  
[www.lxhausys.com/gl/index](http://www.lxhausys.com/gl/index)



LX지인 인테리어필름의 Repeated Image들을 확인해보세요.  
Please check the repeated images of LX Z:IN Interior Film.  
[www.lxbenifdesign.com](http://www.lxbenifdesign.com)



LX지인 도어와 창호를 인테리어필름과 함께 리모델링해보세요.  
Try remodel your LX Z:IN doors and windows with Interior Film.  
[www.lxbenifcolortable.com](http://www.lxbenifcolortable.com)

■ 방염 컬러 Flame Retardant ■ 비방염 컬러 Non-Flame Retardant

**N** 2023년 출시 신제품입니다.  
This is a new product to be released in 2023.

**IM** 이미지에 적용된 컬러입니다.  
The color is applied to the photographic image.

**TA** 해당 컬러는 샘플북 맨 뒤 시공 유의사항을 반드시 지켜주세요.  
Be sure to follow the application instructions at the back of the sample book for the relevant color.

# BENIF

당신이 바라던  
공간에 대한 모든 것,  
Benif에 있습니다.

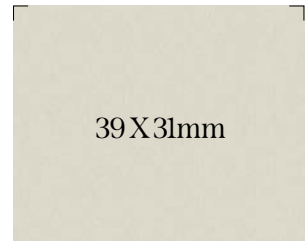
*Everything you could ever long for in a space,  
BENIF has.*

## Recommendation

### Dual 듀얼

빛의 각도에 따라 때론 우아하게,  
때론 유니크하게.  
공간에 새로움을 더합니다.

*Depending upon the angle of light,  
sometimes elegantly and sometimes uniquely.  
Increase novelty to the space.*



39 X 31mm

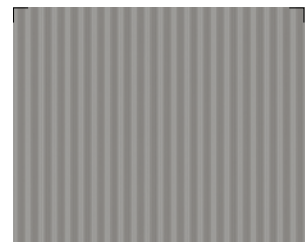
DP002



DP005



NV003



NV002



DP002 / NV003

※ 상기 이미지 안의 제품 패턴과 색상은 실제 제품과 차이가 있을 수 있음을 알려드립니다.

**Recommendation**

**Stone 스톤**

깔끔한 미스티 스톤의 배경과  
오브제가 만나 꿈꾸던  
미니멀한 공간이 탄생합니다.

*A background of neat Misty Stone and an objet  
meet to create a minimalistic space that you have  
dreamed of.*



SM013



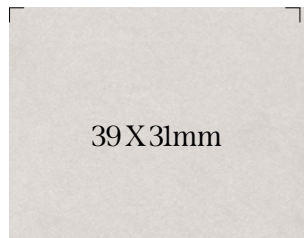
**Big Stone 빅스톤**

빅 그라니트가 선사하는  
중후하고 역동적인 분위기는  
럭셔리함을 한층 높입니다.

*The imposing and dynamic mood presented  
by Big Granite increases luxury.*



BM015



SM013



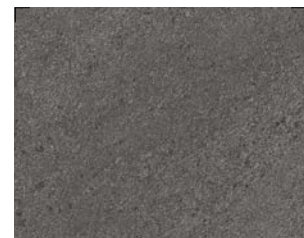
SM015



SM016



BM015



Big Granite  
BM019

Big Granite

※ 상기 이미지 안의 제품 패턴과 색상은 실제 제품과 차이가 있을 수 있음을 알려드립니다.

※ We notice that pattern and color of the product in the above image might differ from the actual product.

**Recommendation**

*Textile* 텍스타일

부드럽고도 섬세한 크로스 패브릭에  
은은한 조명이 더해질 때,  
포근함이 완성됩니다.

*When soft and detailed cross fabric is added with  
delicate lighting, the coziness is completed.*

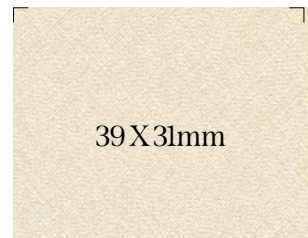
*Wood* 우드

빅 우드와 클래식 우드의  
차분하고도 섬세한 나뭇결이  
근사한 분위기를 선사합니다.

*The calm and detailed wood grain of Big Wood and  
Classic Wood creates a splendid mood.*

SF012

BW020 / PW141



39X31mm

SF012



SF015



BW020



PW141

Soft Walnut

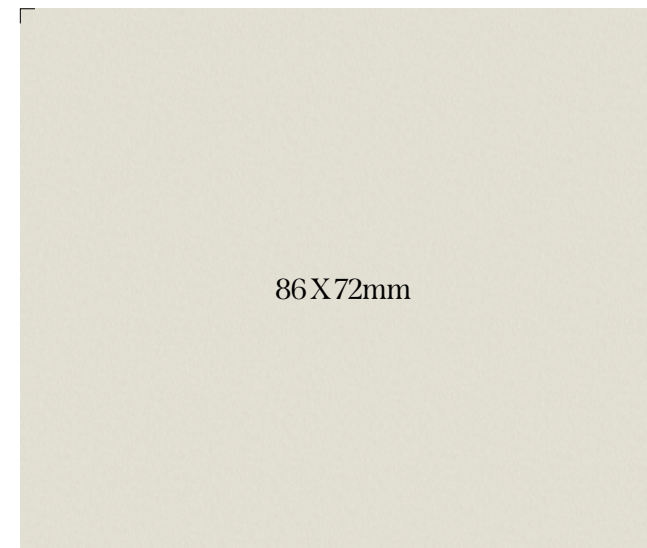
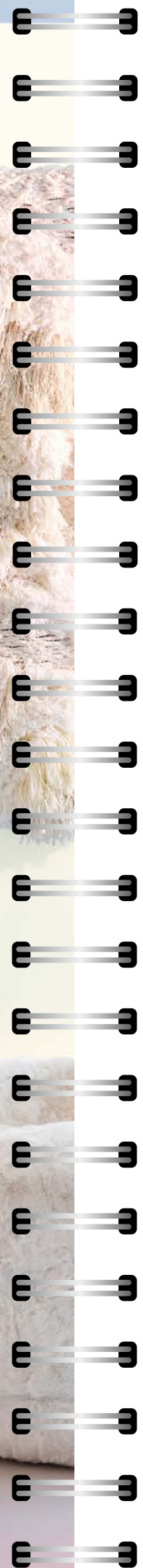
# Dual 듀얼

빛의 각도에 따라 우아하고도 고급스럽게 나만의 독창적인 공간을 연출합니다.  
*Elegantly and luxuriously according to the angle of light. Create your own unique space.*

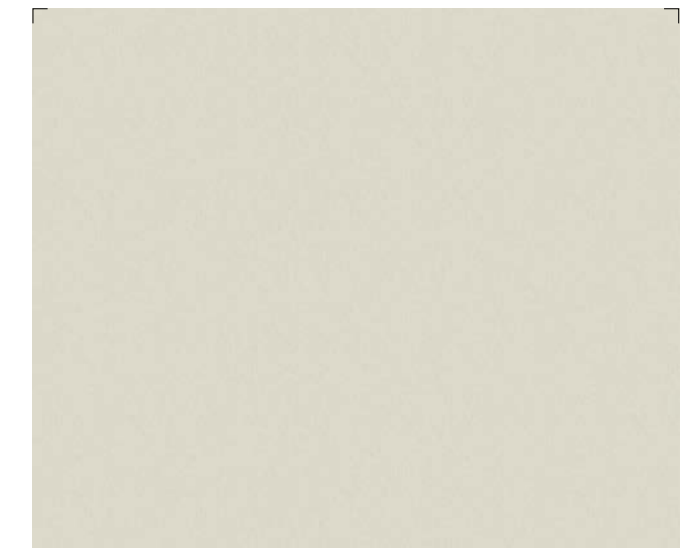


DP001 / DP002

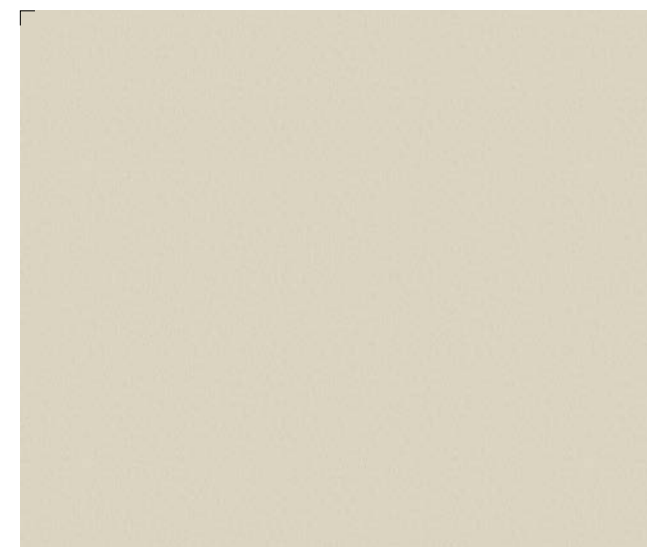
※ 상기 이미지 안의 제품 패턴과 색상은 실제 제품과 차이가 있을 수 있음을 알려드립니다.  
 ※ We notice that pattern and color of the product in the above image might differ from the actual product.



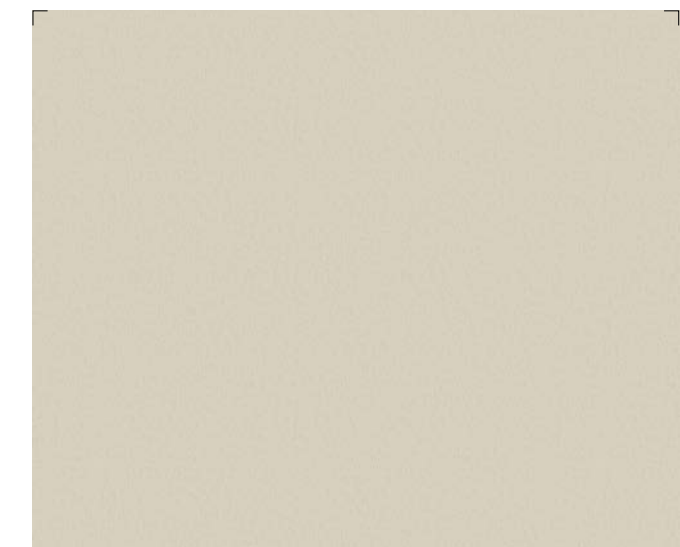
DP001



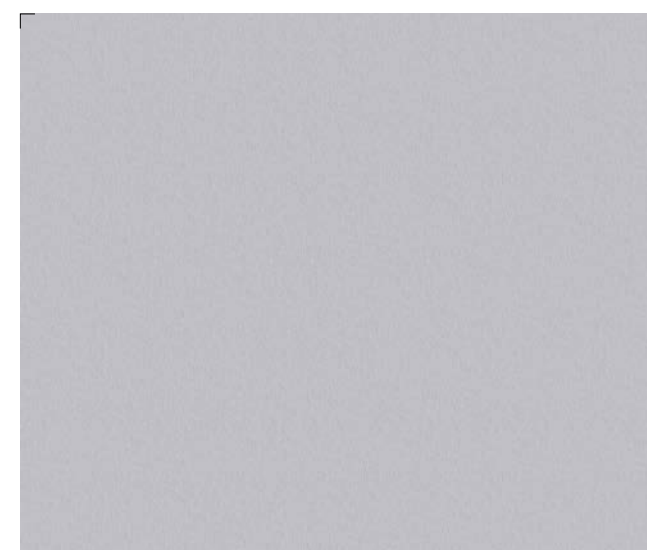
DP002



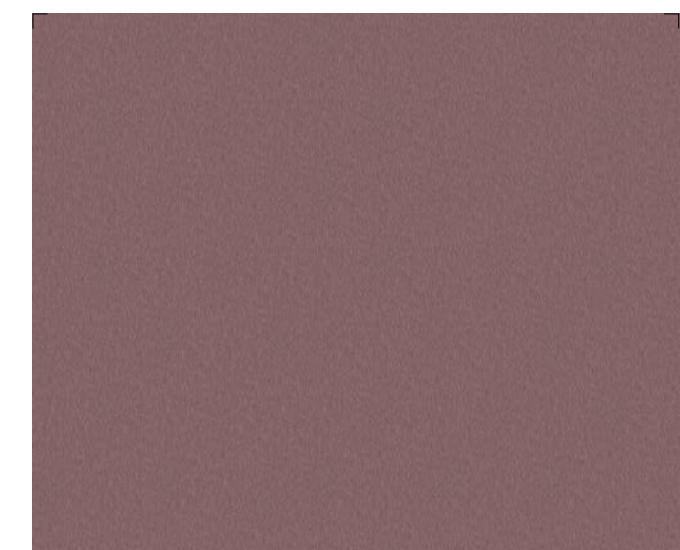
DP003



DP004



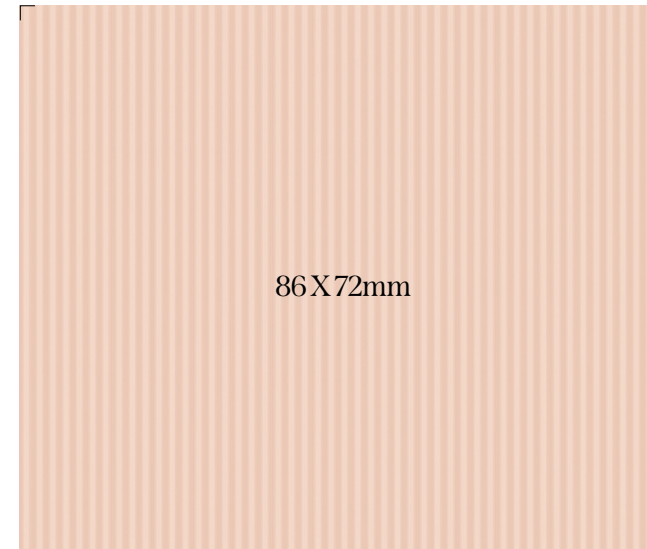
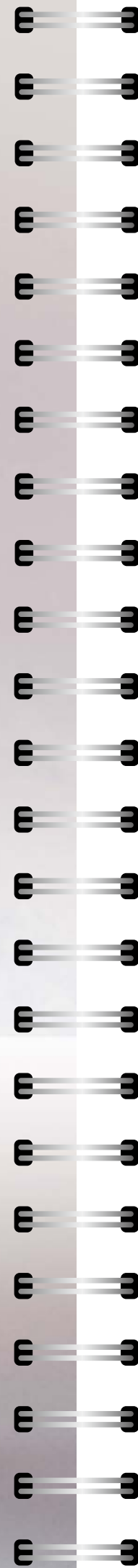
DP005



DP006

※ 제품이 보는 방향에 따라 색상이 다르게 보이므로 정확한 색상 확인을 원하실 경우, 구매 전 실제 제품을 확인해 보세요.  
 ※ The product's color can appear different depending on the viewing angle, so it is recommended to check the actual product before purchasing if you want to confirm its accurate color.

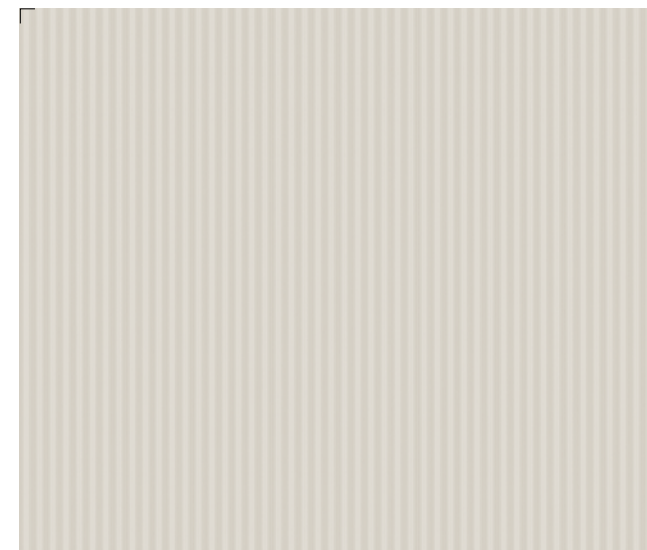




■ NV003



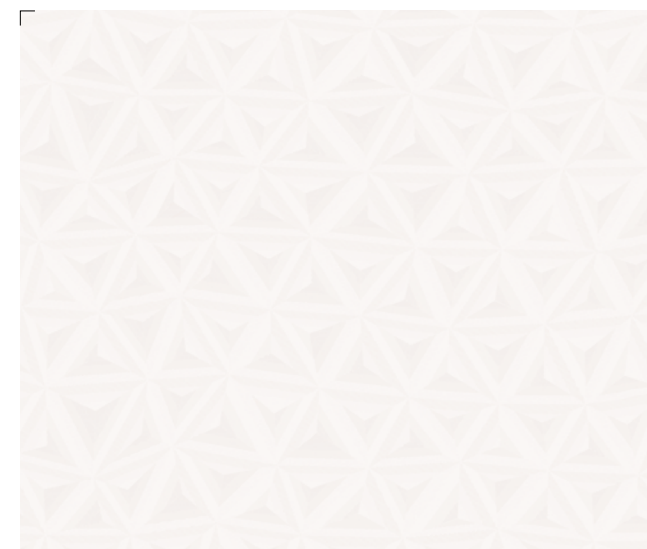
■ NV004



■ NV001



■ NV002



■ NV005



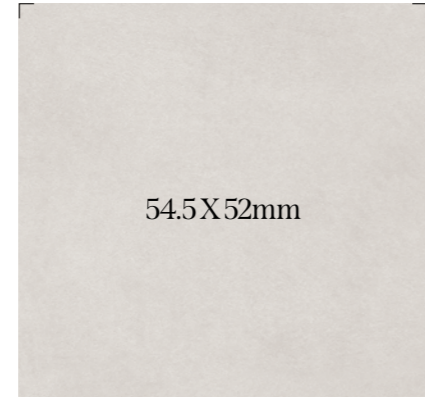
■ NV006

## Misty 미스티

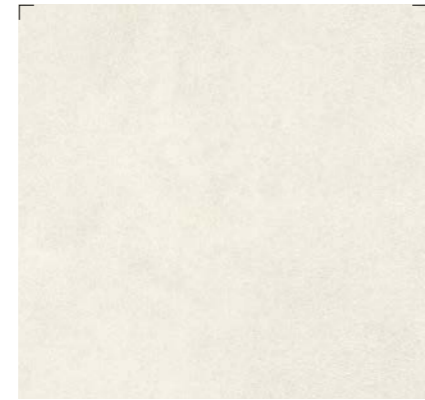
내추럴한 표면 위에 화이트 도장을 한 듯 부드럽고 화사한 분위기를 선사합니다.  
 Make a present of soft and fluorescent mood as if white paint was applied on a natural surface.



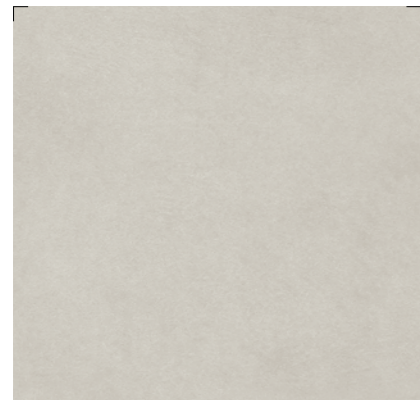
SM001 / SM013 / SM014



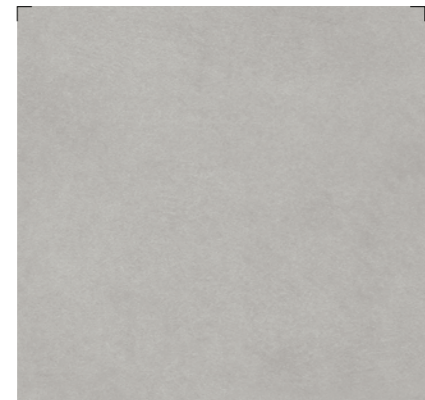
SM013



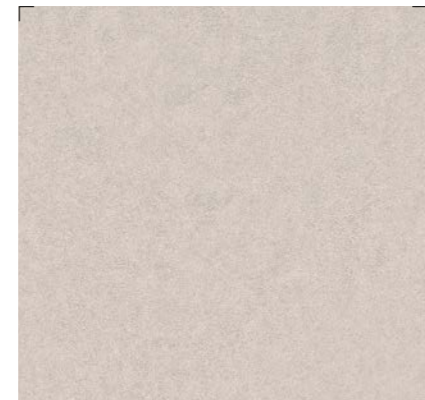
SM005



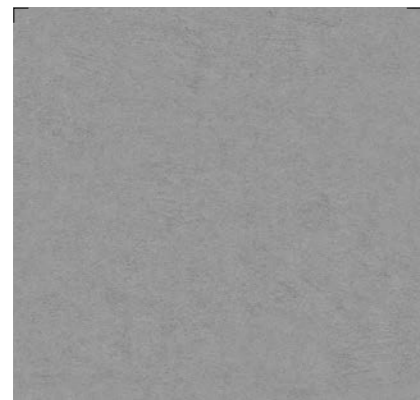
SM014



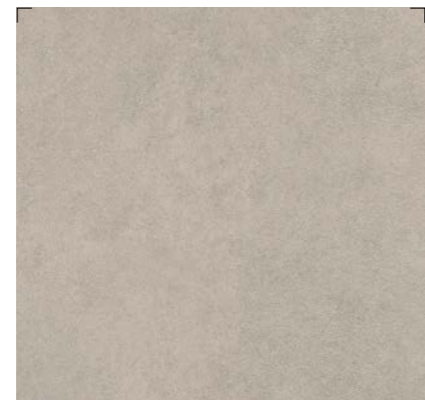
SM015



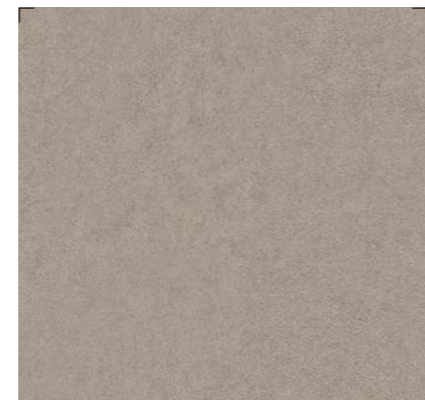
SM006



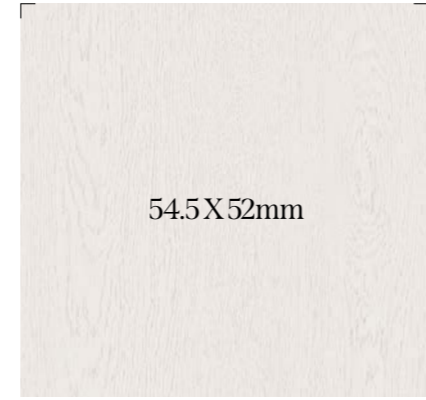
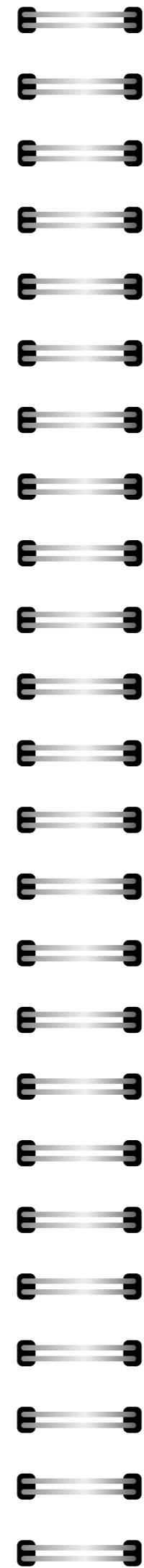
SM016



SM008



SM007



SM001



SM002



SM003



SM009



SM011



SM009



SM010



SM012

\* We notice that pattern and color of the product in the above image might differ from the actual product.

## Emboss 엠보스

은은하게 반사되는 텍스처와 다채로운 색감이 만나 온기를 더합니다.  
 The delicately reflective texture and colorful colors increase warmth.

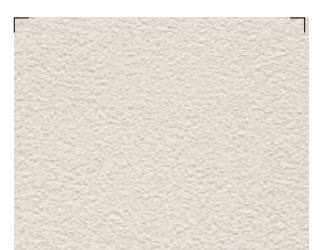
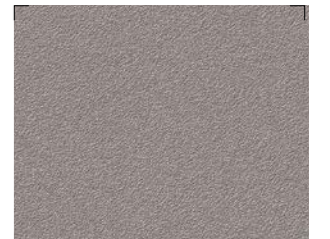
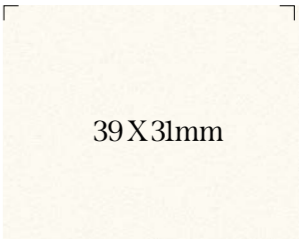
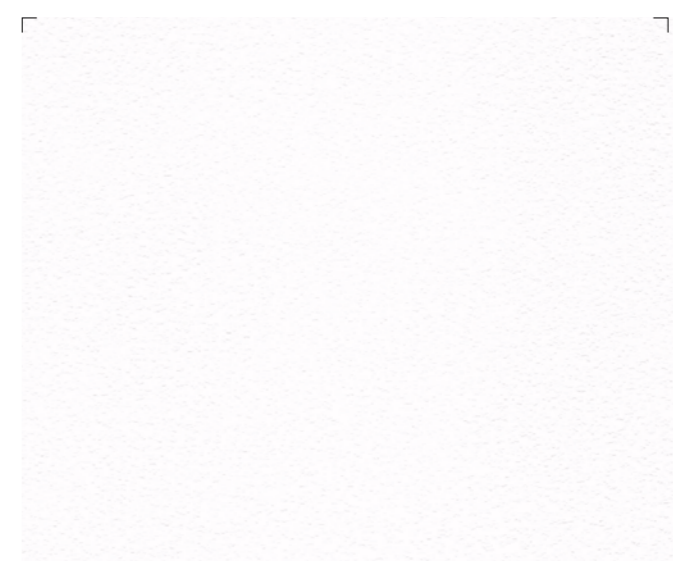
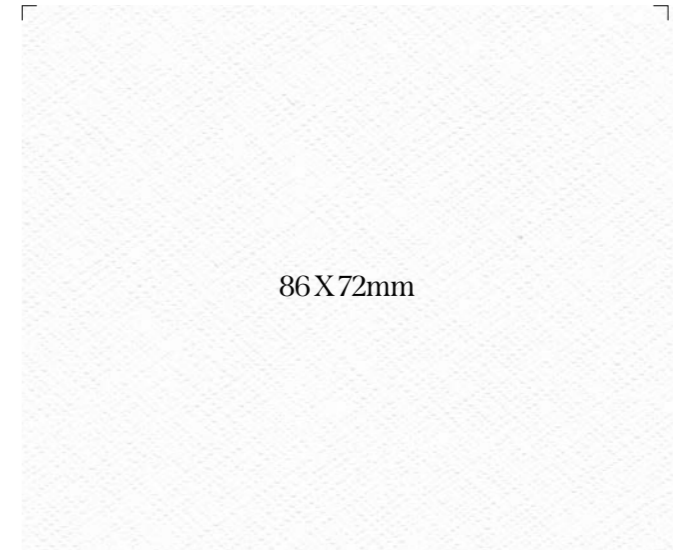
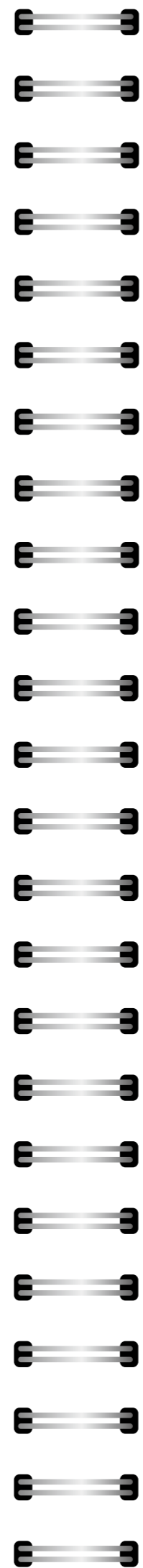
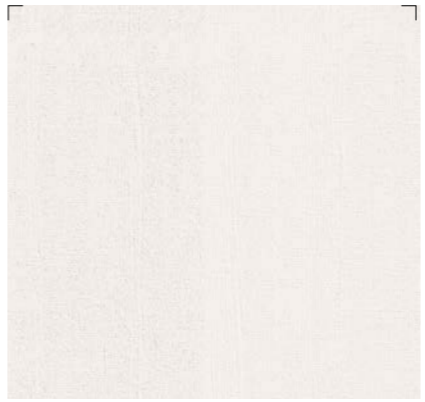
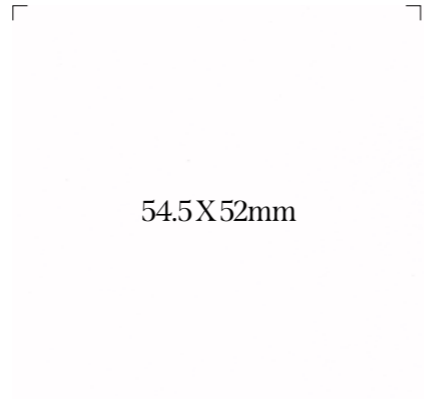
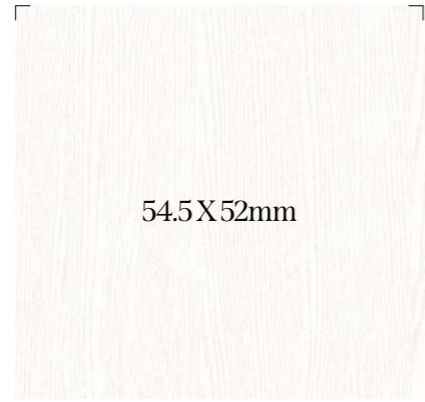


RGM05

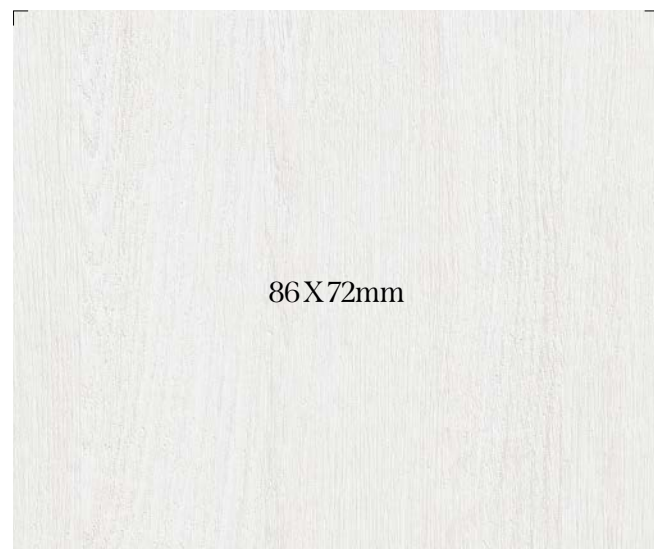
\* 상기 이미지 안의 제품 패턴과 색상은 실제 제품과 차이가 있을 수 있음을 알려드립니다.

\* 상기 이미지 안의 제품 패턴과 색상은 실제 제품과 차이가 있을 수 있음을 알려드립니다.

Emboss 엠보스



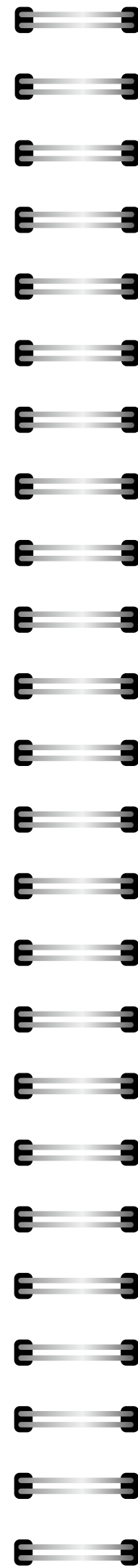
*Emboss* 엠보스



RGM12



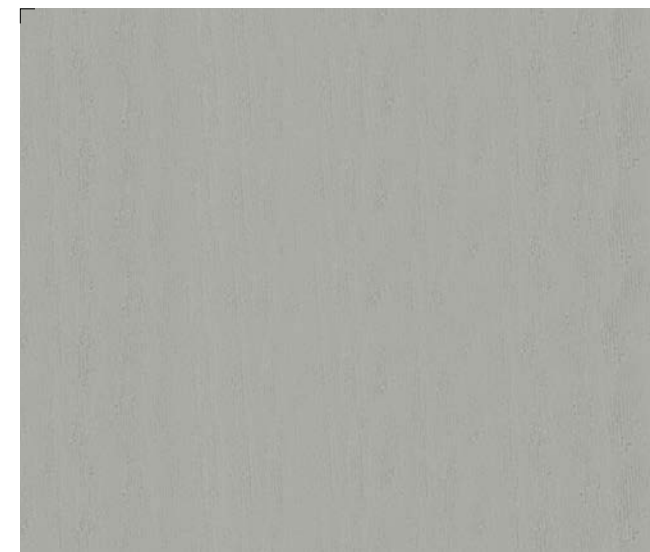
RGM14



RGM05



RGM13



RGM03



RGM02



RGM15

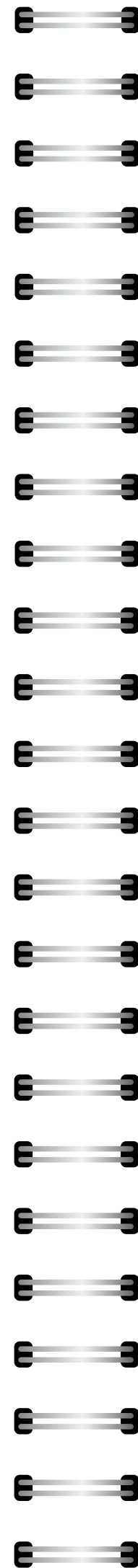


RGM16

※ 상기 이미지 안의 제품 패턴과 색상은 실제 제품과 차이가 있을 수 있음을 알려드립니다.

※ We notice that pattern and color of the product in the above image might differ from the actual product.

**Solid** 솔리드



# Metal 메탈

화려한 느낌의 메탈은 세련되고 럭셔리한 공간을 완성합니다.  
Gorgeous metal completes refined and luxurious space.



PME05 / PME06

※ 상기 이미지 안의 제품 패턴과 색상은 실제 제품과 차이가 있을 수 있음을 알려드립니다.



117.25 X 52mm

■ PME01

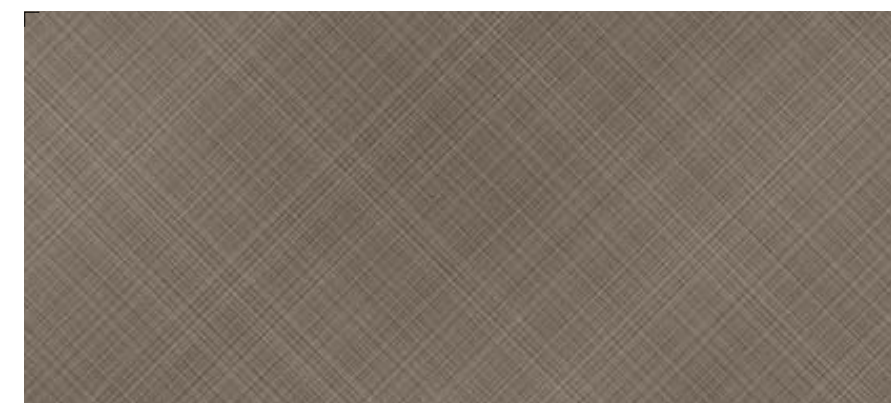


54.5 X 52mm

■ PME02



■ PME06



■ PME08



■ PME04



■ PME09



■ PME07



■ PME10



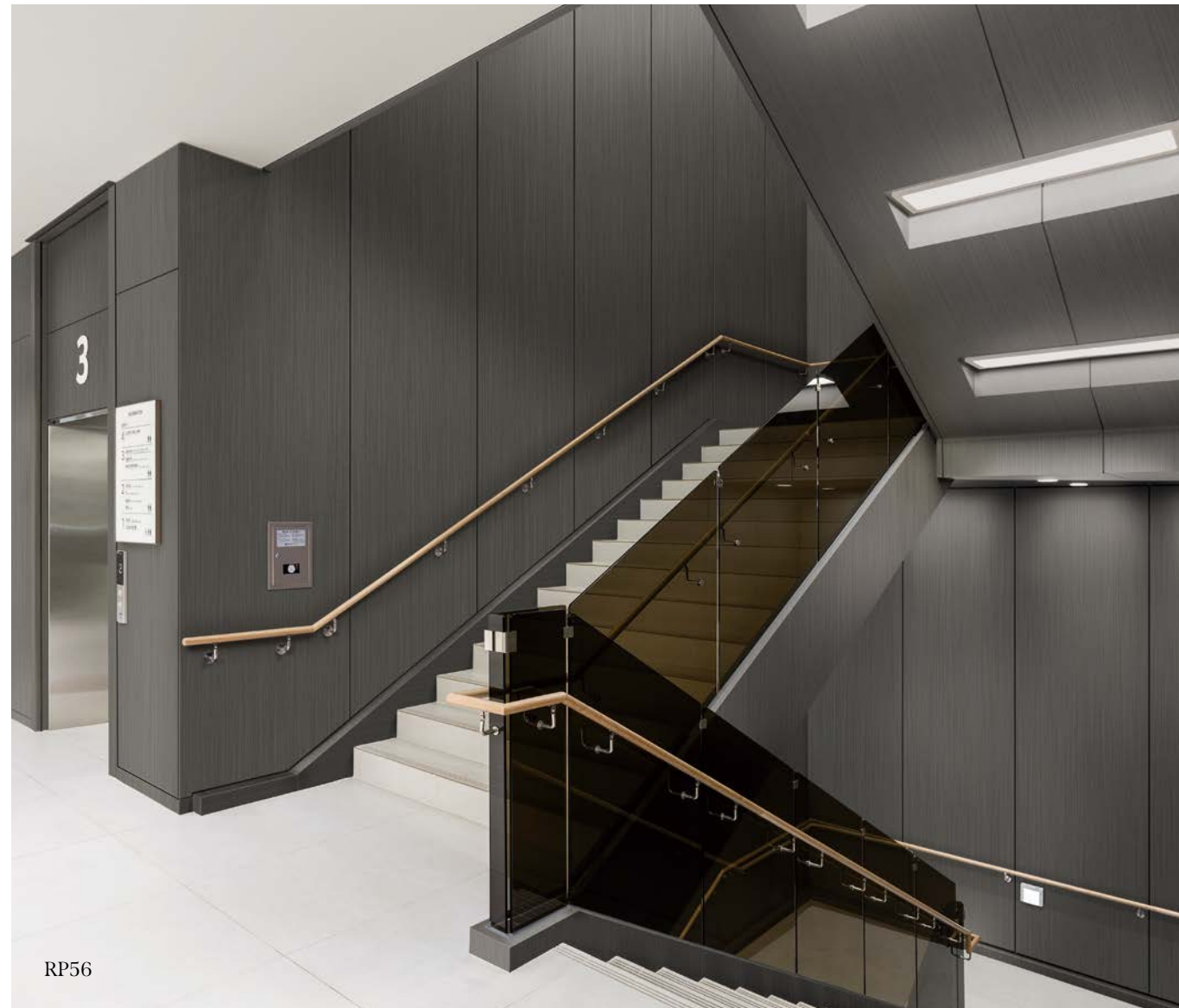
■ PME03



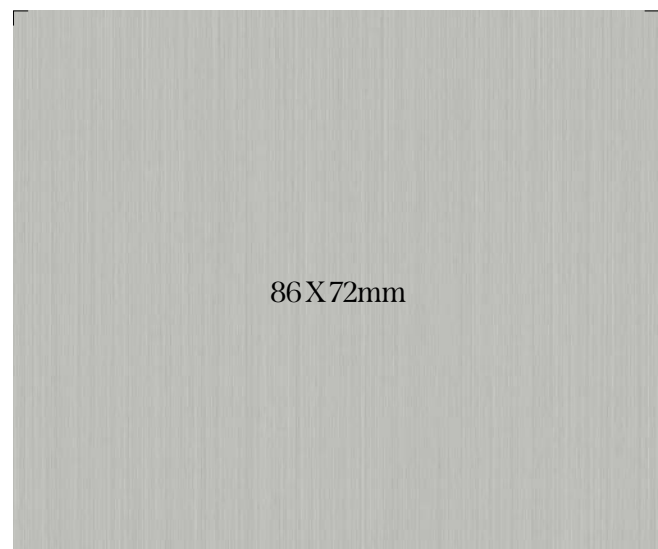
■ PME05

※ We notice that pattern and color of the product in the above image might differ from the actual product.

*Metal* 메탈



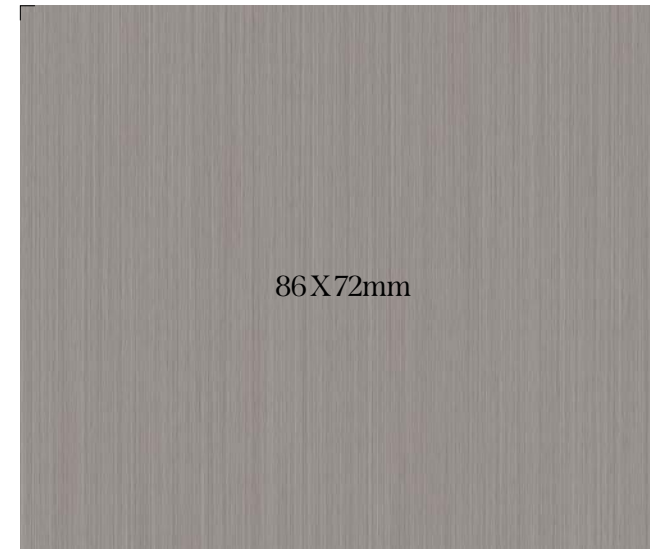
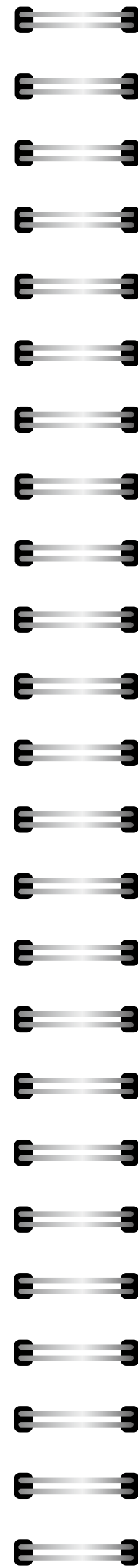
RP56



RP57



RP56



RP54



RP55

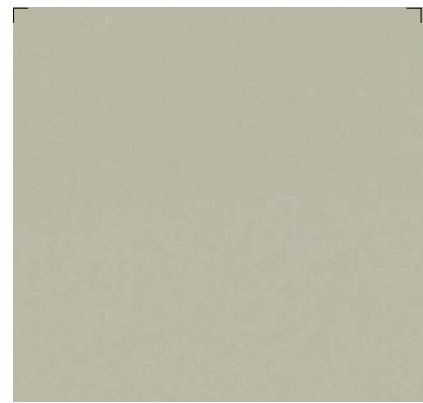


RP54

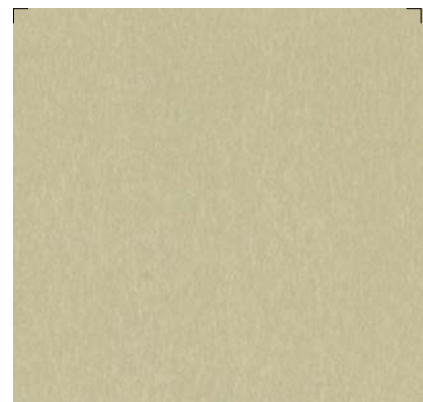
*Metal* 메탈

54.5X52mm

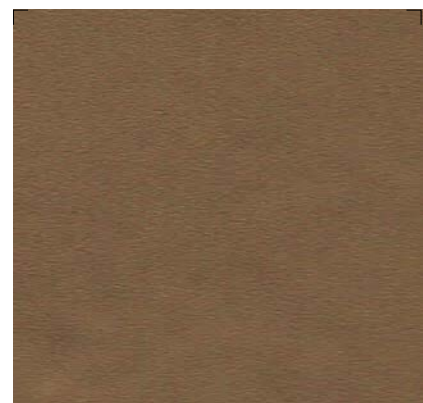
■MS21



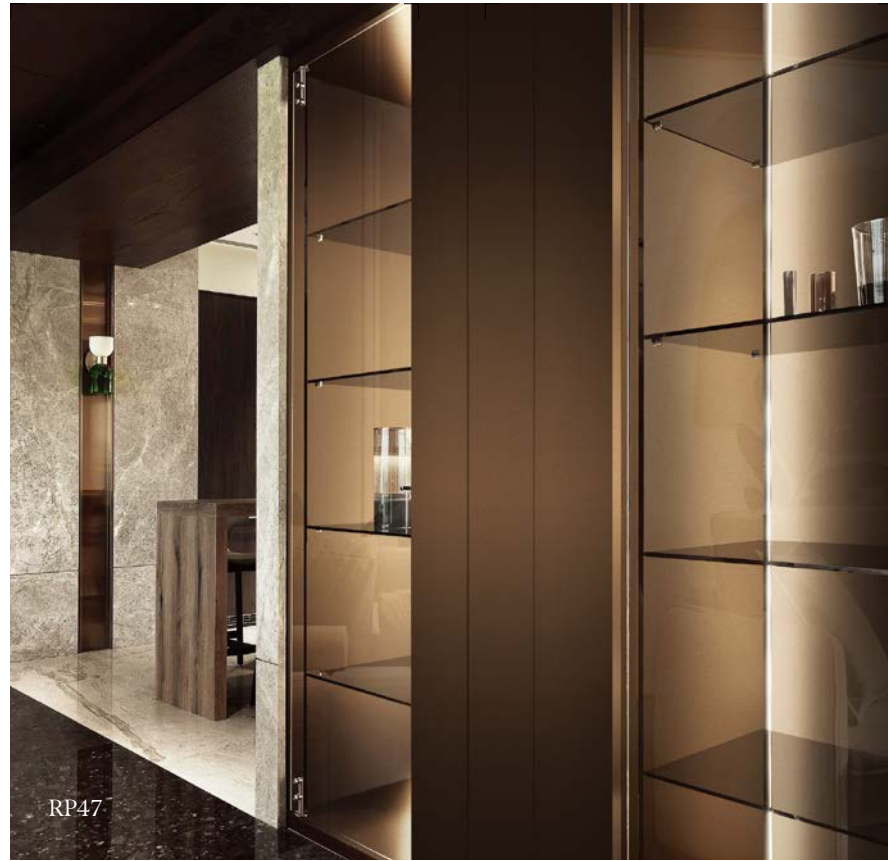
■MS18



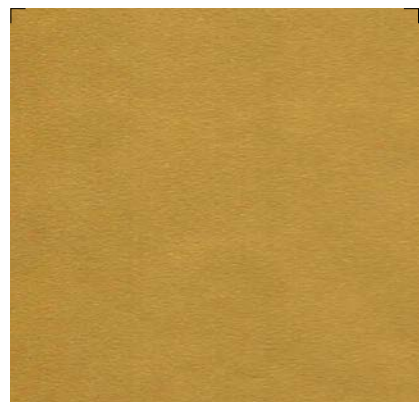
■MS09



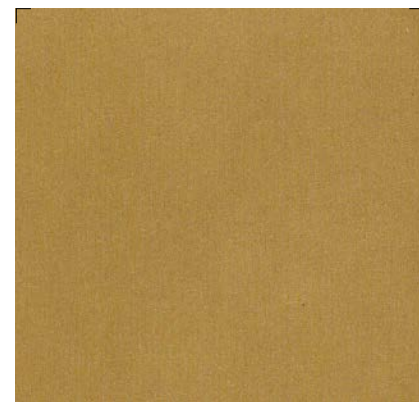
■RP47



RP47



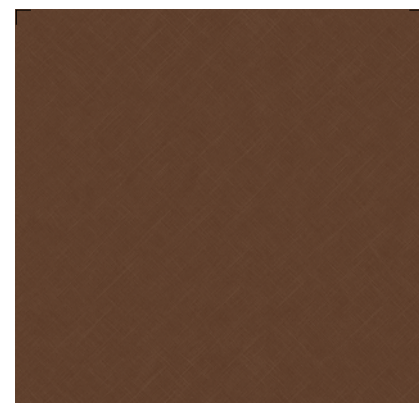
■RP48



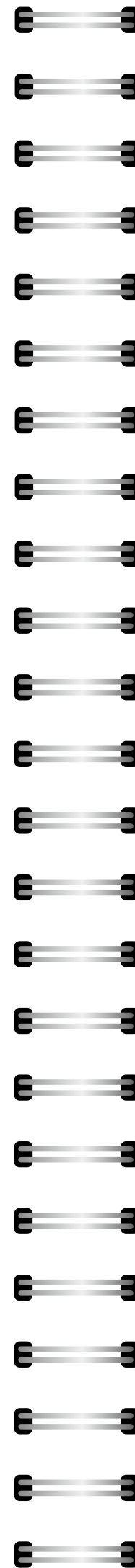
■RP06



■RP45

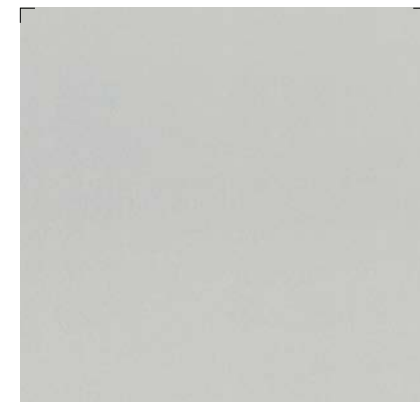


■RP52



54.5X52mm

■MS01



■RP04



■MS20

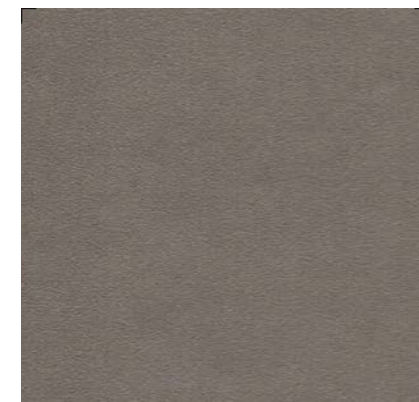


■RP53

■MS19



■RP42



■RP46

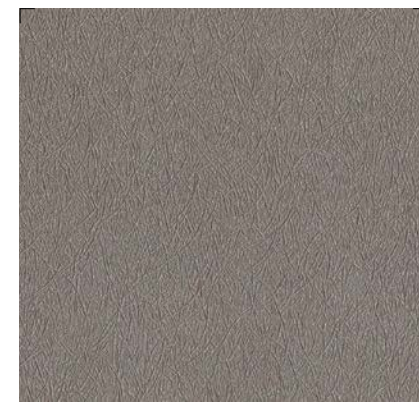


■RP50

■RP08



■RP03



■RP49



■RP51



Classic Wood 클래식 우드

나무보다 더 나무답게, 나무의 부드러운 숨결을 공간 안에 가득 담습니다.  
 More being like a tree than a tree, Put its soft breath in the full of space.



■ PW141

Soft Walnut



■ PW142

Soft Walnut



■ PW143

Soft Walnut

Classic Wood 클래식 우드



■ PW116

Standard Oak



■ PW126

Aiguille Oak



■ PW129

Aiguille Oak



■ PW123

Walnut



■ PW117

Standard Oak



■ PW136

Eiche



■ PW127

Aiguille Oak



■ PW113

Slap Oak



Classic Wood 클래식 우드



■ PW105 🌿

Teak



■ PW109 🌿

Ash



■ PW130 🌿

Aiguille Oak



■ PW139 🌿

Olive Ash



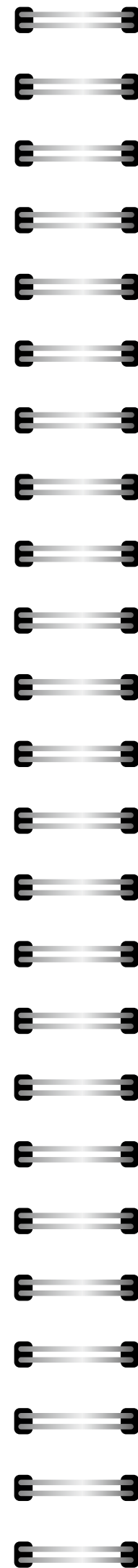
■ PW106 🌿

Teak

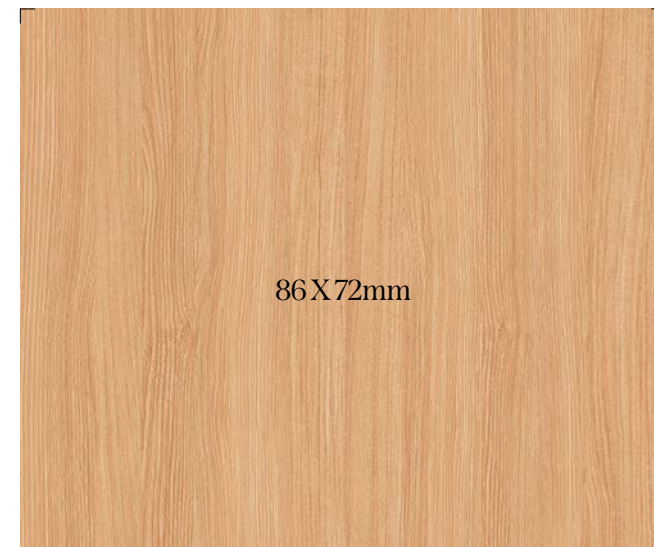


■ PW110 🌿

Ash



PW105



■ PW133 🌿

Danish Teak



■ PW131 🌿

Aiguille Oak

Classic Wood 클래식 우드



■ PW137

Eiche



■ PW118

Standard Oak



■ PW119

Standard Oak



■ PW140

Olive Ash



■ PW102

Oak



■ PW101

Oak



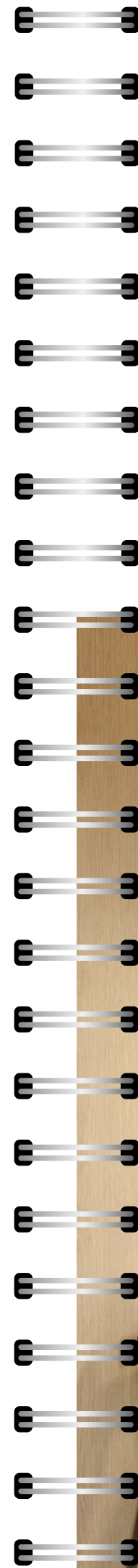
■ PW132

Danish Teak



■ PW114

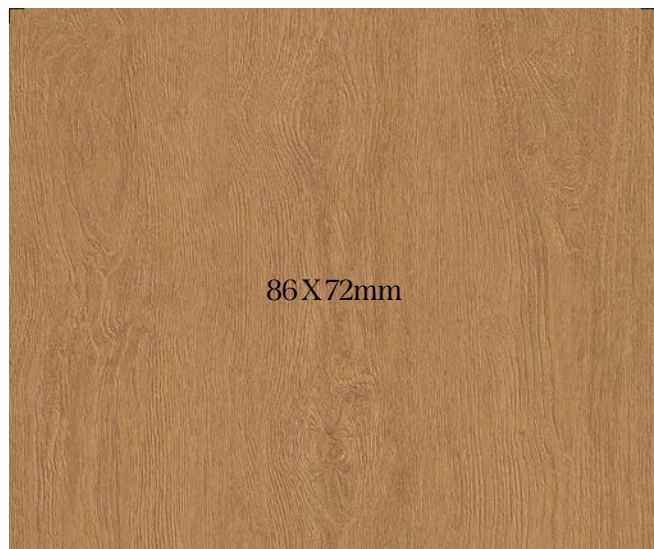
Slap Oak



PW118

※ We notice that pattern and color of the product in the above image might differ from the actual product.

Classic Wood 클래식 우드



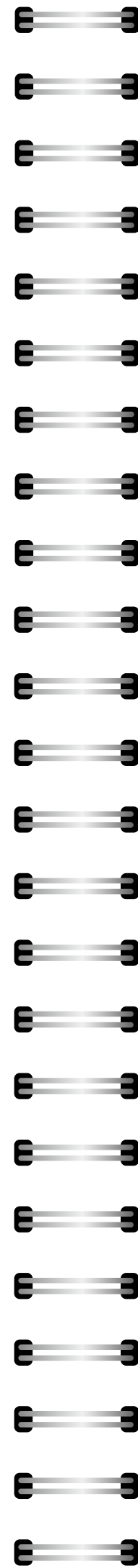
■ PW103

Oak



■ PW134

Danish Teak



■ PW107

Teak



■ PW121

Standard Oak



■ PW108

Teak



■ PW124

Walnut



■ PW115

Slap Oak



■ PW125

Walnut

Classic Wood 클래식 우드



■ PW138 🍷 Olive Ash



■ PW111 🍷 Ash



■ PW112 🍷 Ash



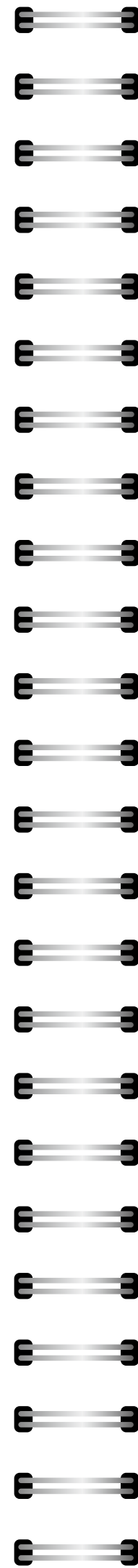
■ PW128 🍷 Aiguille Oak



■ PW120 🍷 Standard Oak



■ PW104 🍷 Oak



■ PW135 🍷 Danish Teak



■ PW122 🍷 Standard Oak

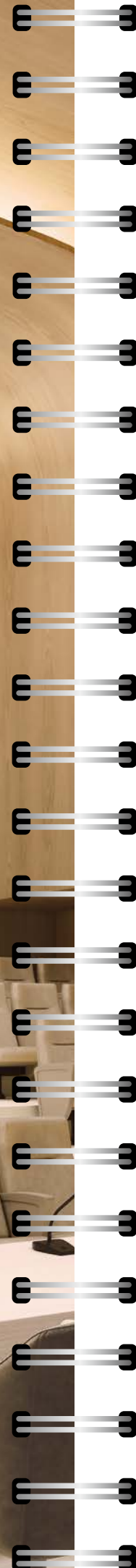
# Big Wood 빅우드

우드 슬랩의 커다랗고 웅장한 나이테, 길게 뻗은 나뭇결을 오롯이 느껴보세요.  
Feel the huge and majestic annual rings of the wood slab and the long grain of the wood.



BW021

\* 상기 이미지 안의 제품 패턴과 색상은 실제 제품과 차이가 있을 수 있음을 알려드립니다.



■BW020

Walnut



■BW021

Walnut



■BW023

Walnut



■BW022

Walnut

\* We notice that pattern and color of the product in the above image might differ from the actual product.

Big Wood 빅우드



BW017



180 X 72mm

■BW016

Teak



180 X 72mm

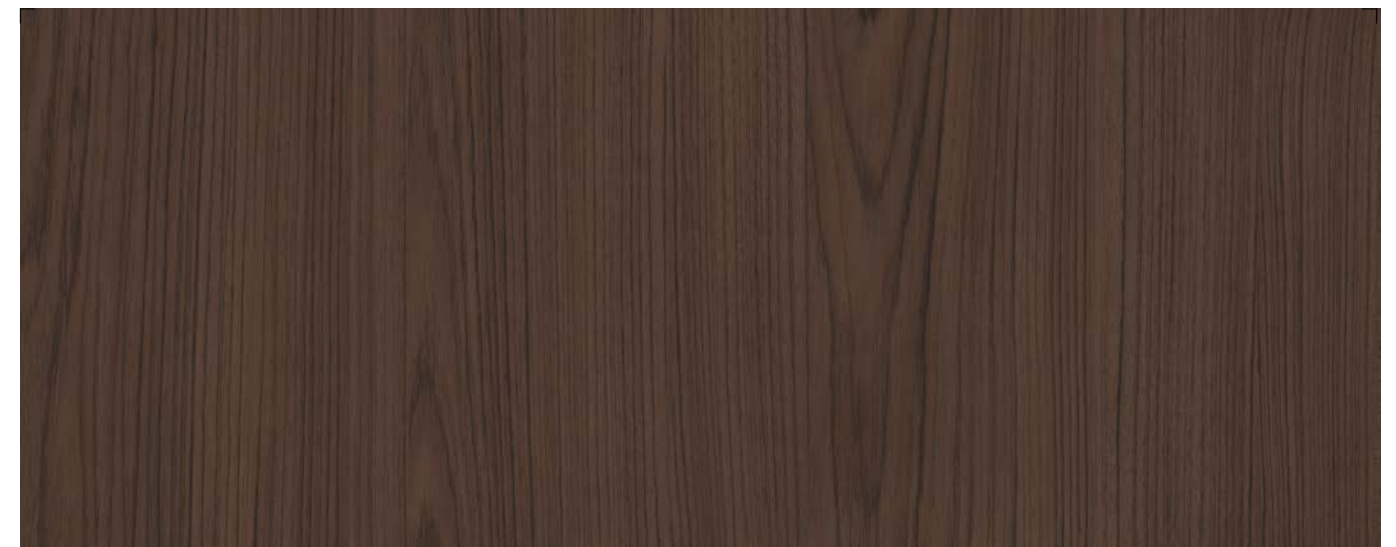
■BW017

Teak



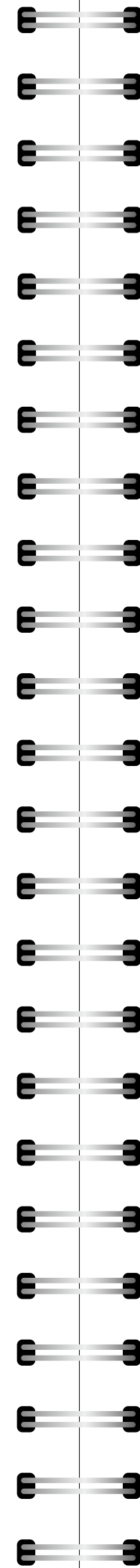
■BW018

Teak



■BW019

Teak



※ 상기 이미지 안의 제품 패턴과 색상은 실제 제품과 차이가 있을 수 있음을 알려드립니다.

※ We notice that pattern and color of the product in the above image might differ from the actual product.



*Big Wood* 빅우드



■ BW001

Ash



■ BW007

Antique Oak



■ BW010

Lauan



■ BW005

Oak



■ BW014

Washed Ash



■ BW013

Lauan



■ BW015

Washed Ash



■ BW006

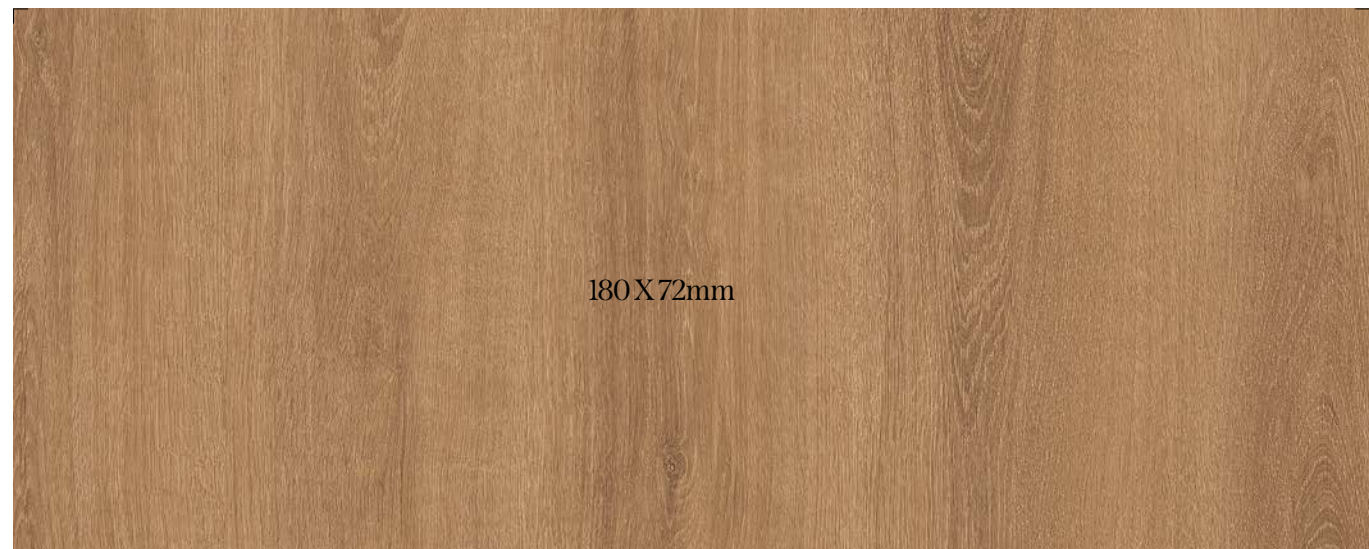
Oak



DR'S SOLUTION



BW008



■ BW002

Walnut



■ BW008

Antique Oak



■ BW009

Antique Oak



■ BW004

Oak



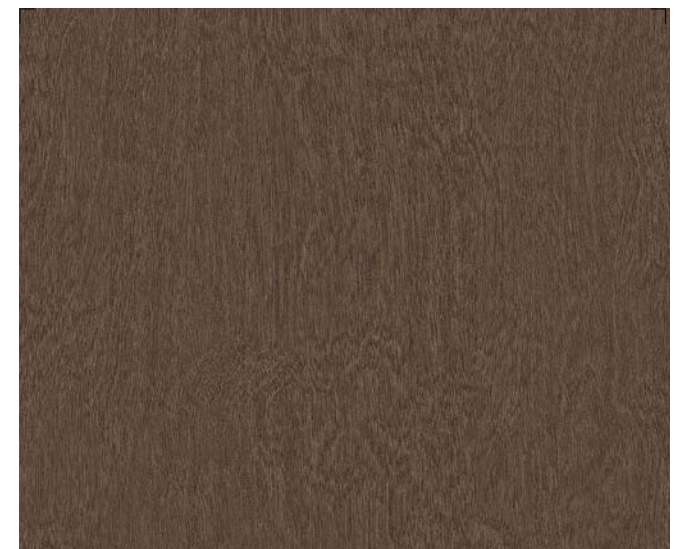
■ BW011

Lauan



■ BW003

Walnut



■ BW012

Lauan

# Premium Wood 프리미엄 우드

깊이 있고 자연스러운 나뭇결을 있는 그대로 고스란히 담습니다.  
Put the deep and natural wood grain into itself as it is.



NW041



NW102 Oak



NW080 Castagno Cardduci



NW099 Walnut



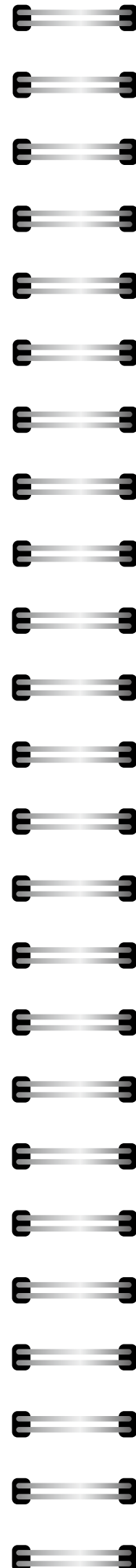
NW041 White Oak



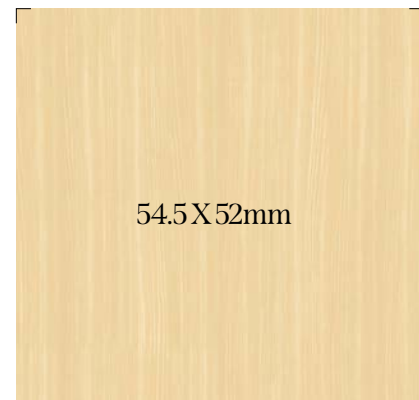
NW112 Ash



NW073 Birch



NW078



NW071 Maple



NW057 Oak



NW032 Oak



NW078 Teak

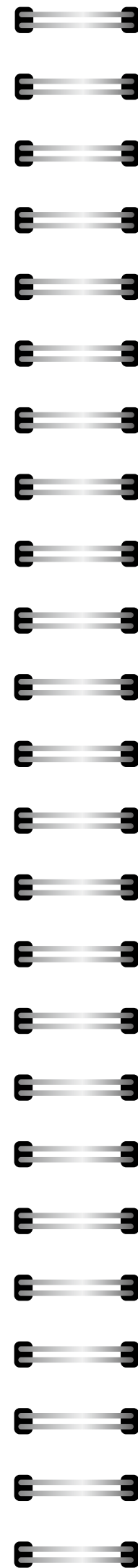


NW062 Wizard Grain



NW070 Ash

Premium Wood 프리미엄 우드



Premium Wood 프리미엄 우드



NW089 Teak



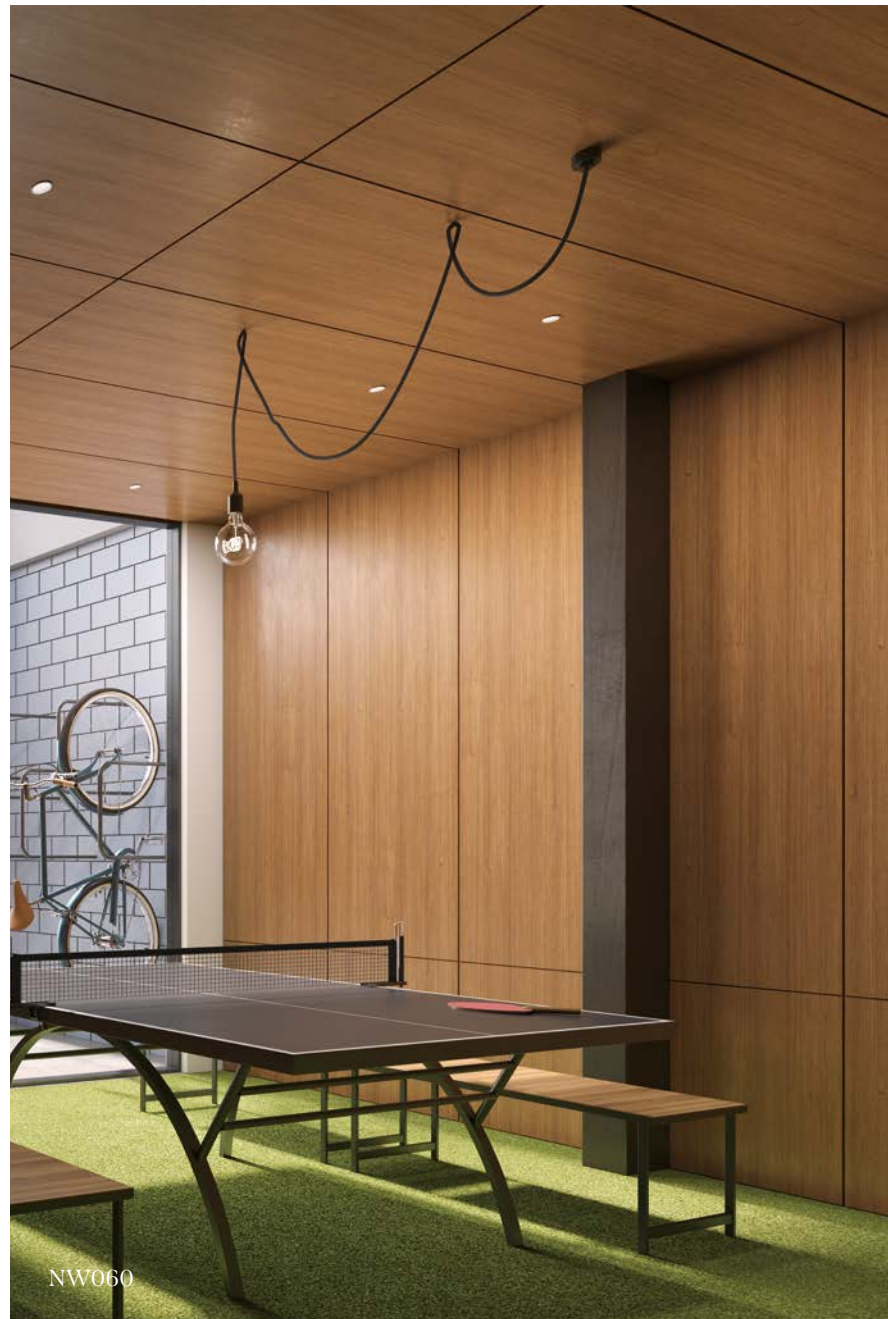
NW045 Walnut



NW007 Amazahoue



NW087 Oak



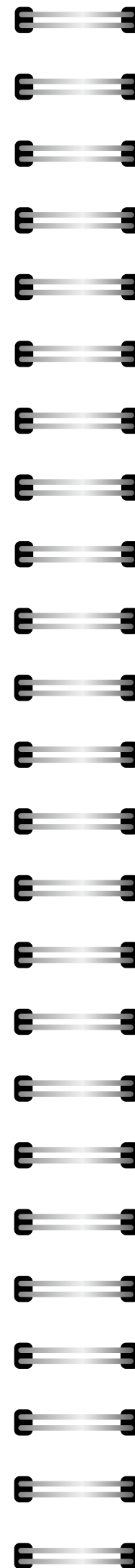
NW060



NW060 Walnut



NW008 Amazahoue



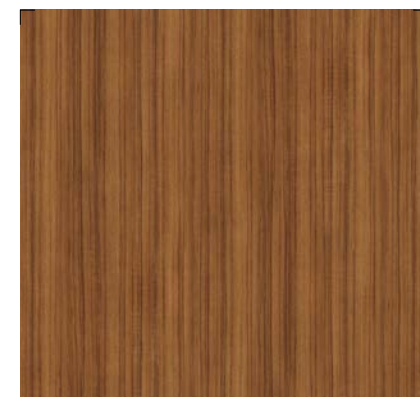
NW104



NW046 Walnut



NW104 Oak



NW063 Teak



NW055 Teak



NW090 Teak

Premium Wood 프리미엄 우드



NW114



NW111 Ash



NW110 Teak



NW053 Teak



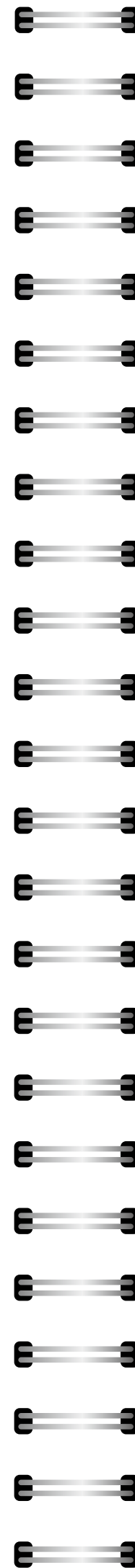
NW114 Ash



NW113 Ash



NW082 Oak



NW109



NW086 Oak



NW109 Teak



NW100 Walnut



NW101 Walnut



NW092 Line Teak



NW084 Oak

Premium Wood 프리미엄 우드



NW116 Brushed Oak



NW120 Washed Oak



NW122 Washed Oak



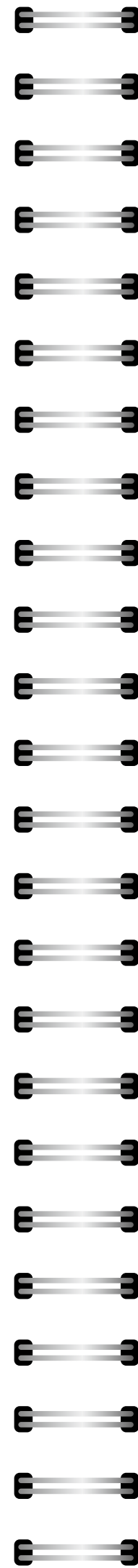
NW119 Brushed Oak



NW117 Brushed Oak



NW121 Washed Oak



NW123 Washed Oak



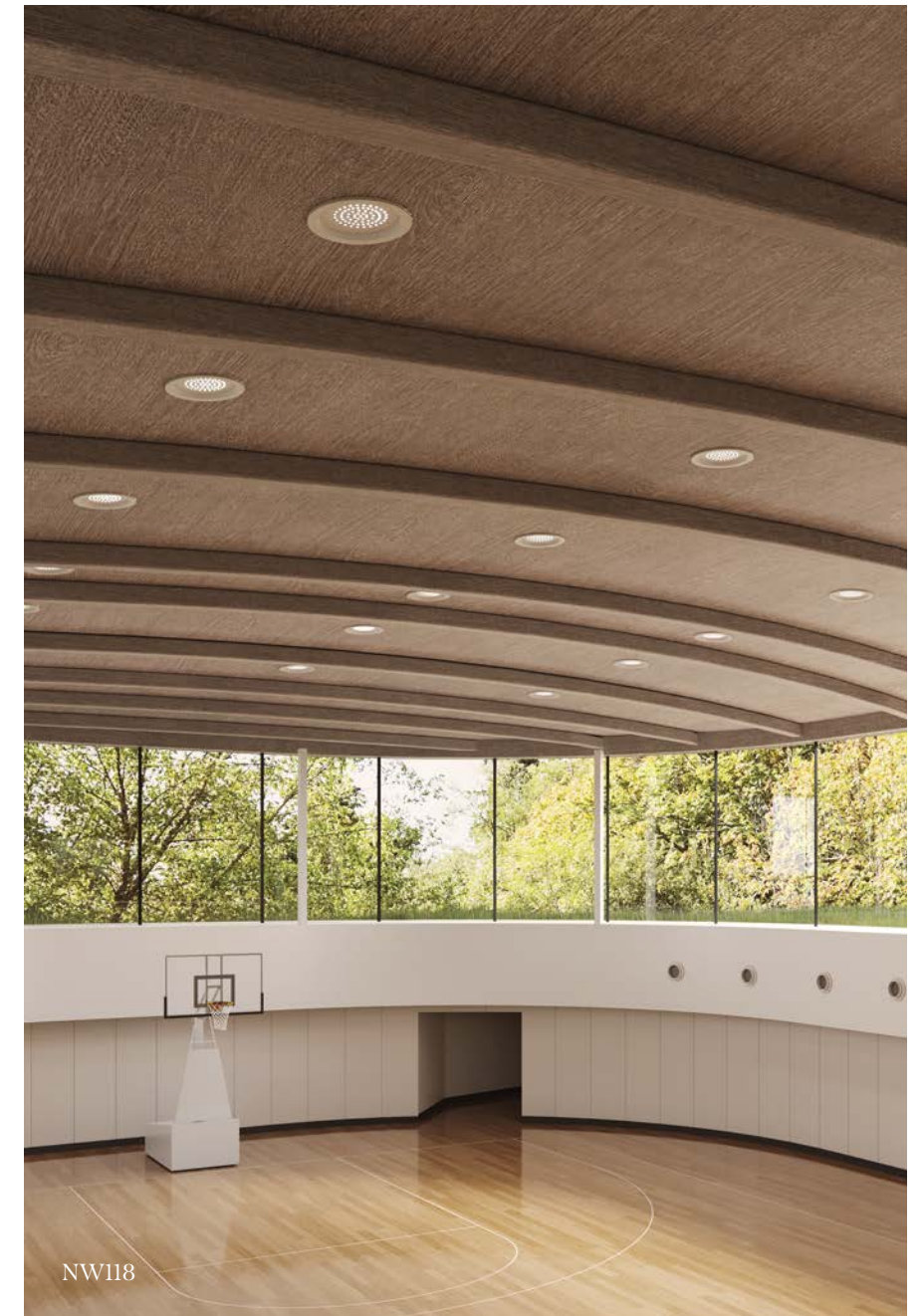
NW118 Brushed Oak



NW015 Oak



NW068 Padouk



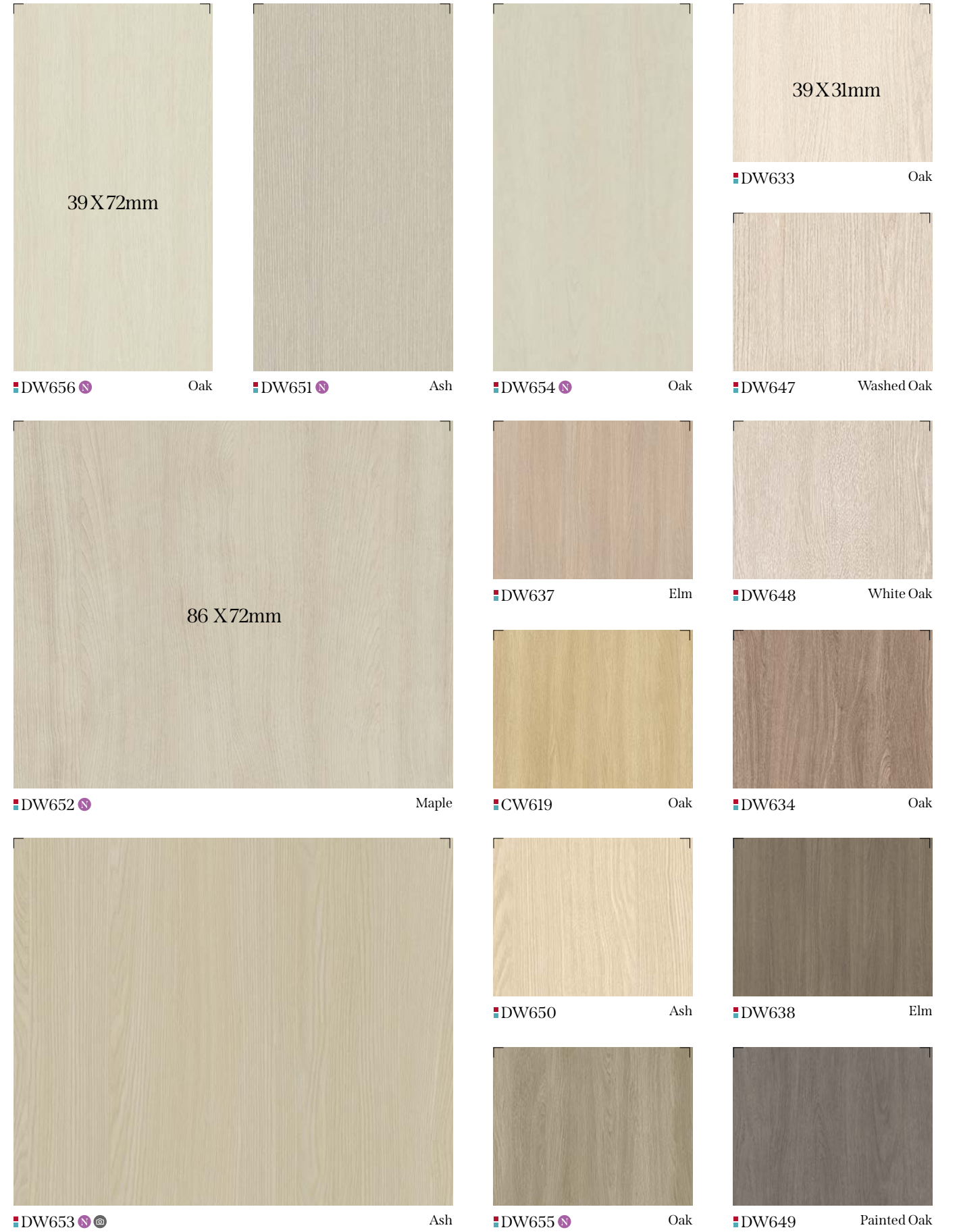
NW017 Oak



NW056 Teak

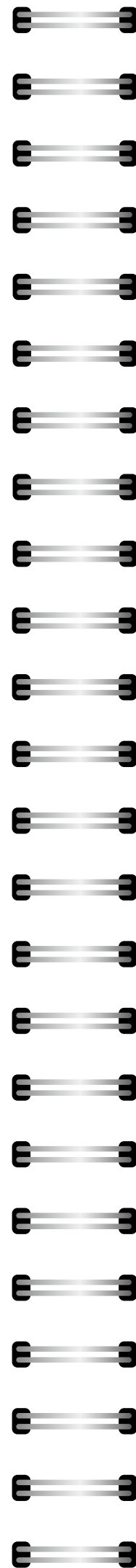
# Wood 우드

나무만이 갖고 있는 다양한 색상과 친근한 아름다움을 느껴보세요.  
 Feel the variety of colors and homish beauty that only woods have.





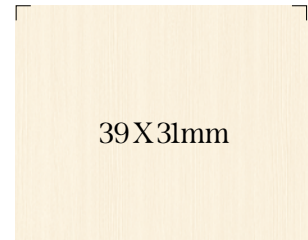
# Wood 우드



Wood 우드



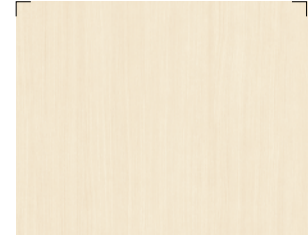
CW530



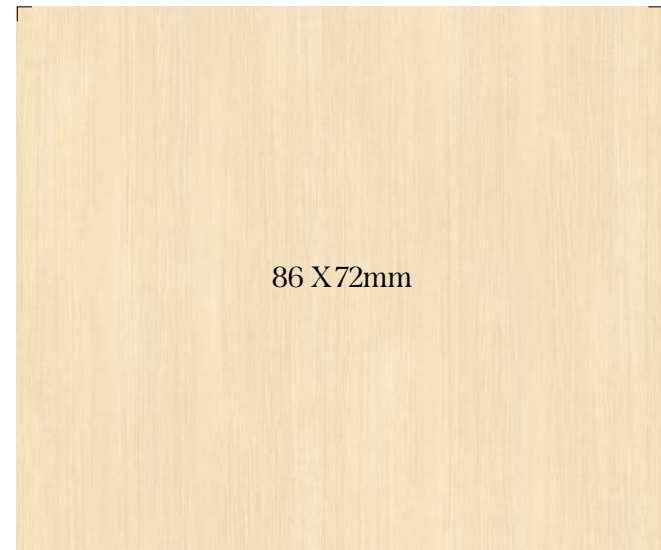
■ CW511 Elm



■ CW552 Birch



■ CW437 Cherry



■ CW530 Ash



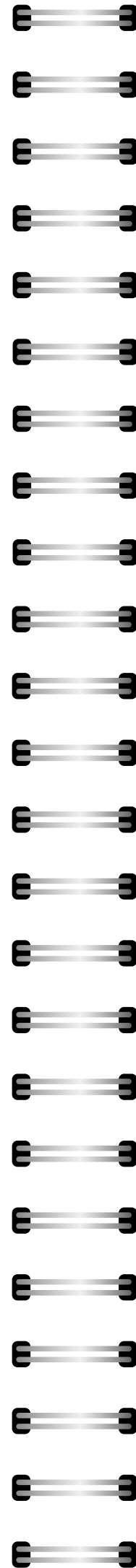
■ DW406 Wizard Grain



■ CW424 Olive Line



■ CW527 Maple



■ CW575 Ash



■ CW600 Ash



■ CW597 Oak



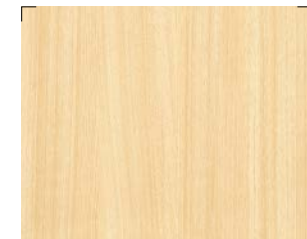
■ DW182 Teak



■ CW521 Pine



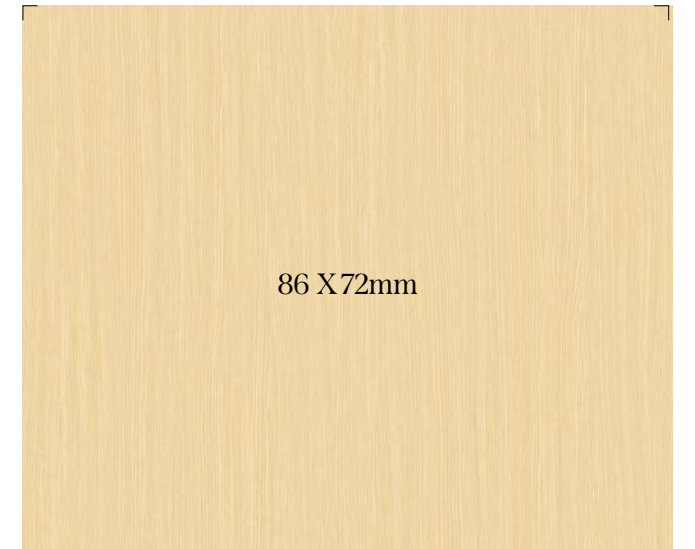
■ CW544 Rosewood



■ DW161 Oak



■ DW644 Ash



■ CW240 Elm



■ CW506 Teak



■ CW626 Oak

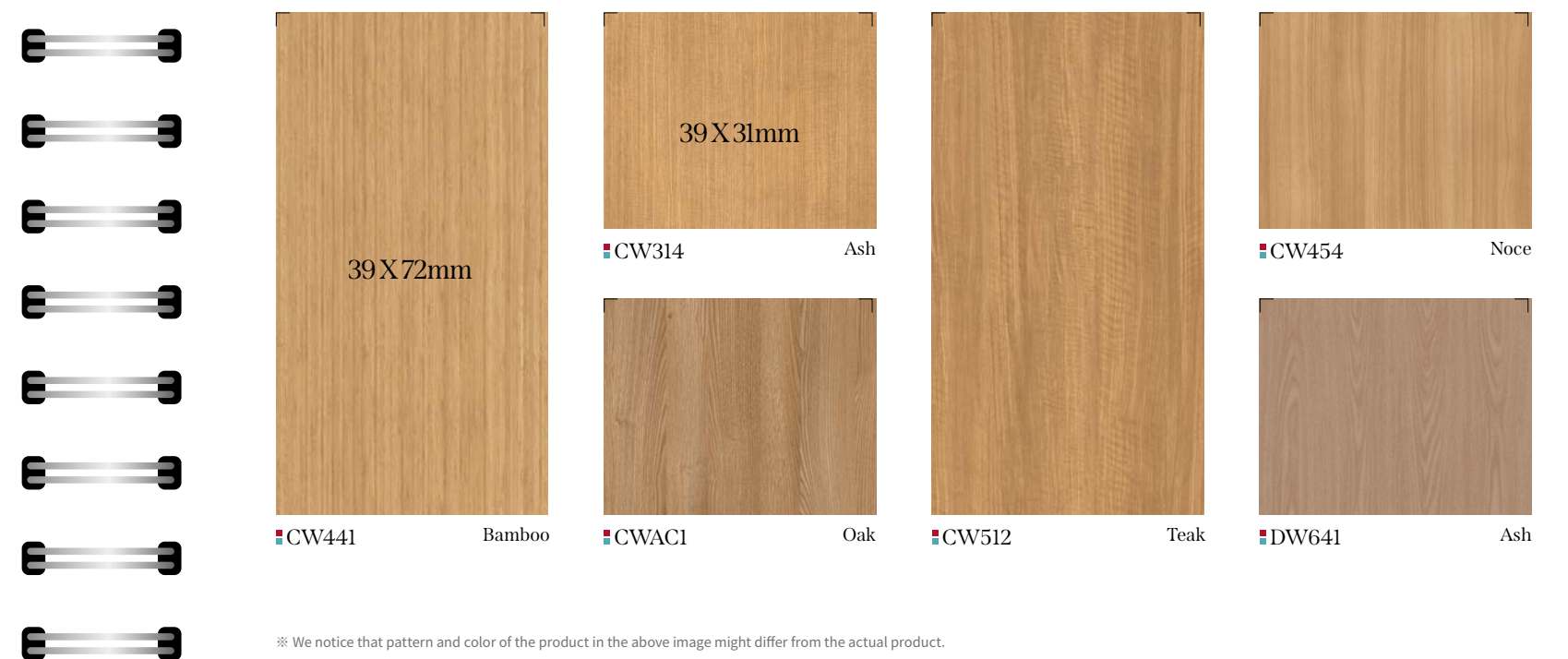


■ CWPF3 Oak

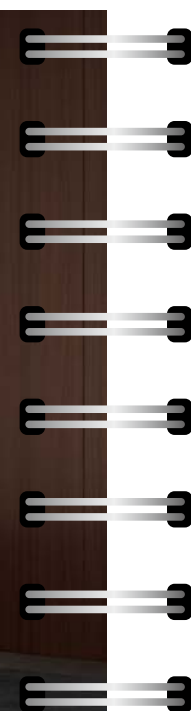
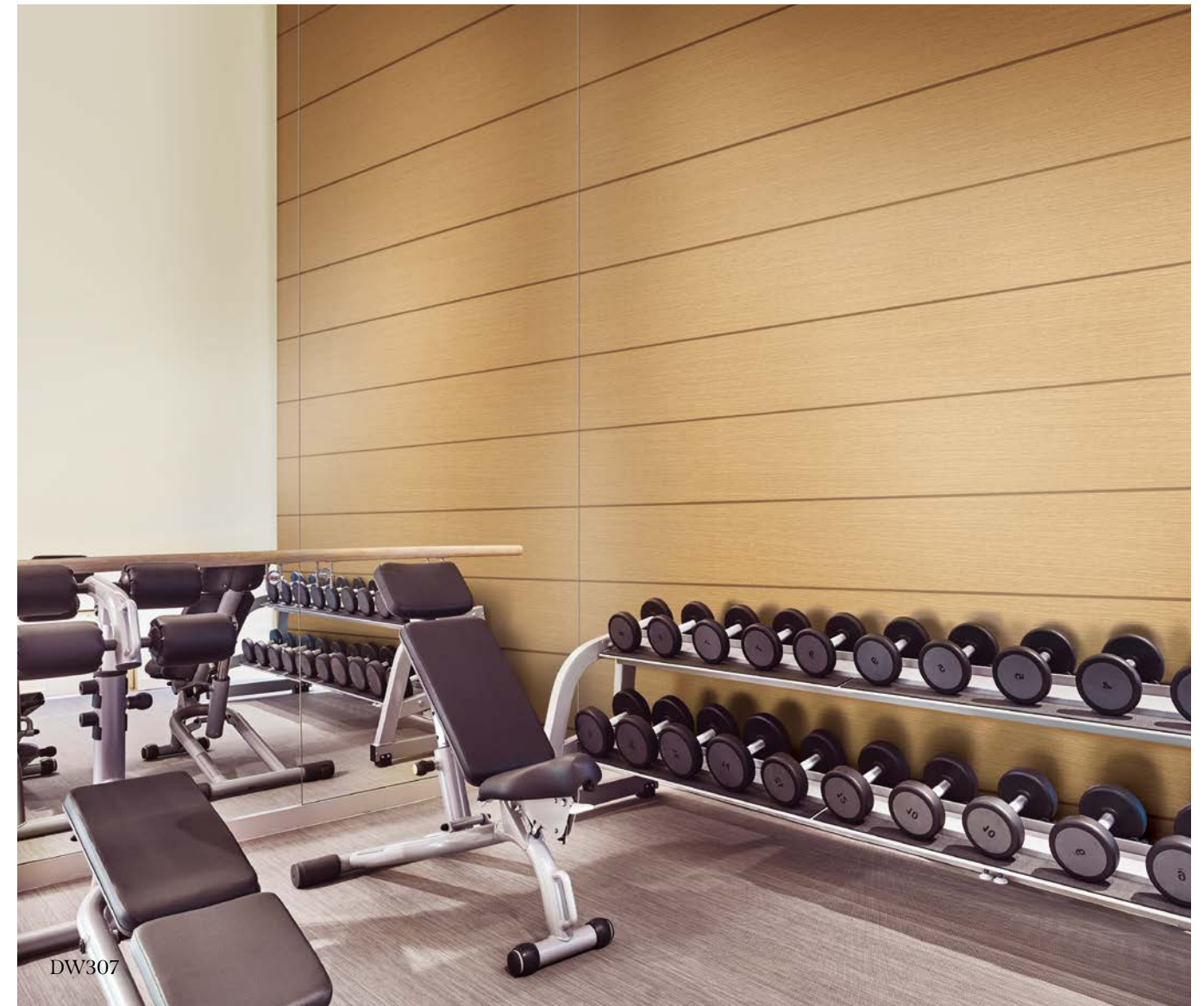
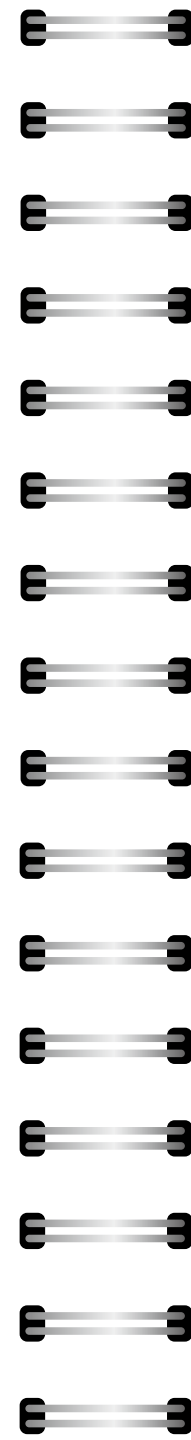
※ 상기 이미지 안의 제품 패턴과 색상은 실제 제품과 차이가 있을 수 있음을 알려드립니다.

※ We notice that pattern and color of the product in the above image might differ from the actual product.

# Wood 우드



# Wood 우드



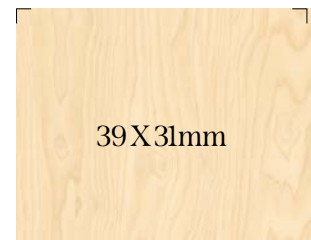
※ 상기 이미지 안의 제품 패턴과 색상은 실제 제품과 차이가 있을 수 있음을 알려드립니다.

※ We notice that pattern and color of the product in the above image might differ from the actual product.

Wood 우드



CW537



CW537<sup>®</sup> Birch



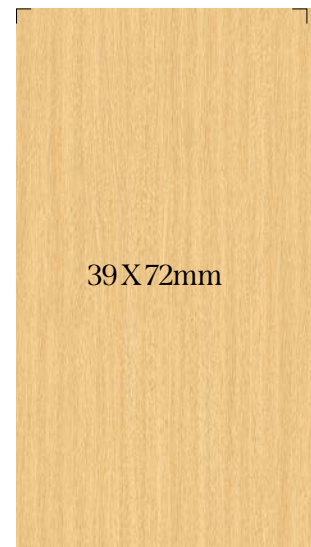
CW590 Birch



CW79 Maple



CW175 Oak



CW598 Oak



DW157 Maple



CW453 Noce



DW646 Ash



CW154 Teak



DW398 Green Pine



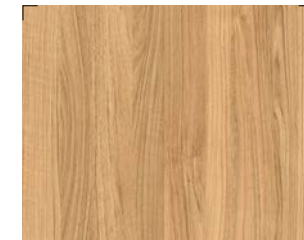
DW646 Ash



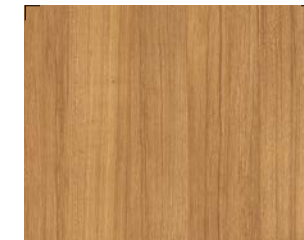
CW258 Oak



DW550 Oak



CW609 Walnut



DW180 Teak



CW427 Noce



DW179 Teak



CW455 Noce



DW180 Teak



CW124 Cherry



CWB1 Cherry



DW400 Antique Pine



CW320 Zebrano



CW111 Cherry



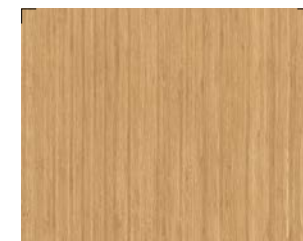
CW513 Teak



CW150 Teak



CW177 Teak



CW44 Anegre



CW69 Cherry



DW190 Teak



CW348 Rosewood



CW87 Walnut

Wood 우드



■ SW008



■ SW010



■ SW004



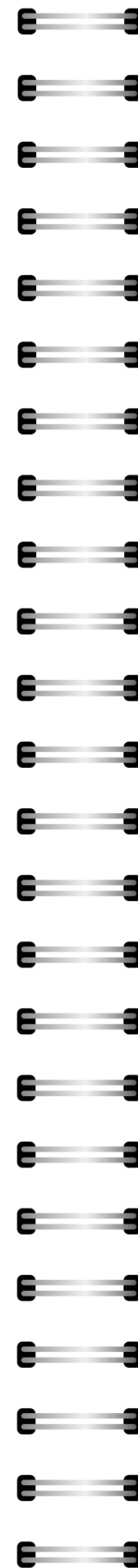
■ SW011



■ SW009



■ SW005



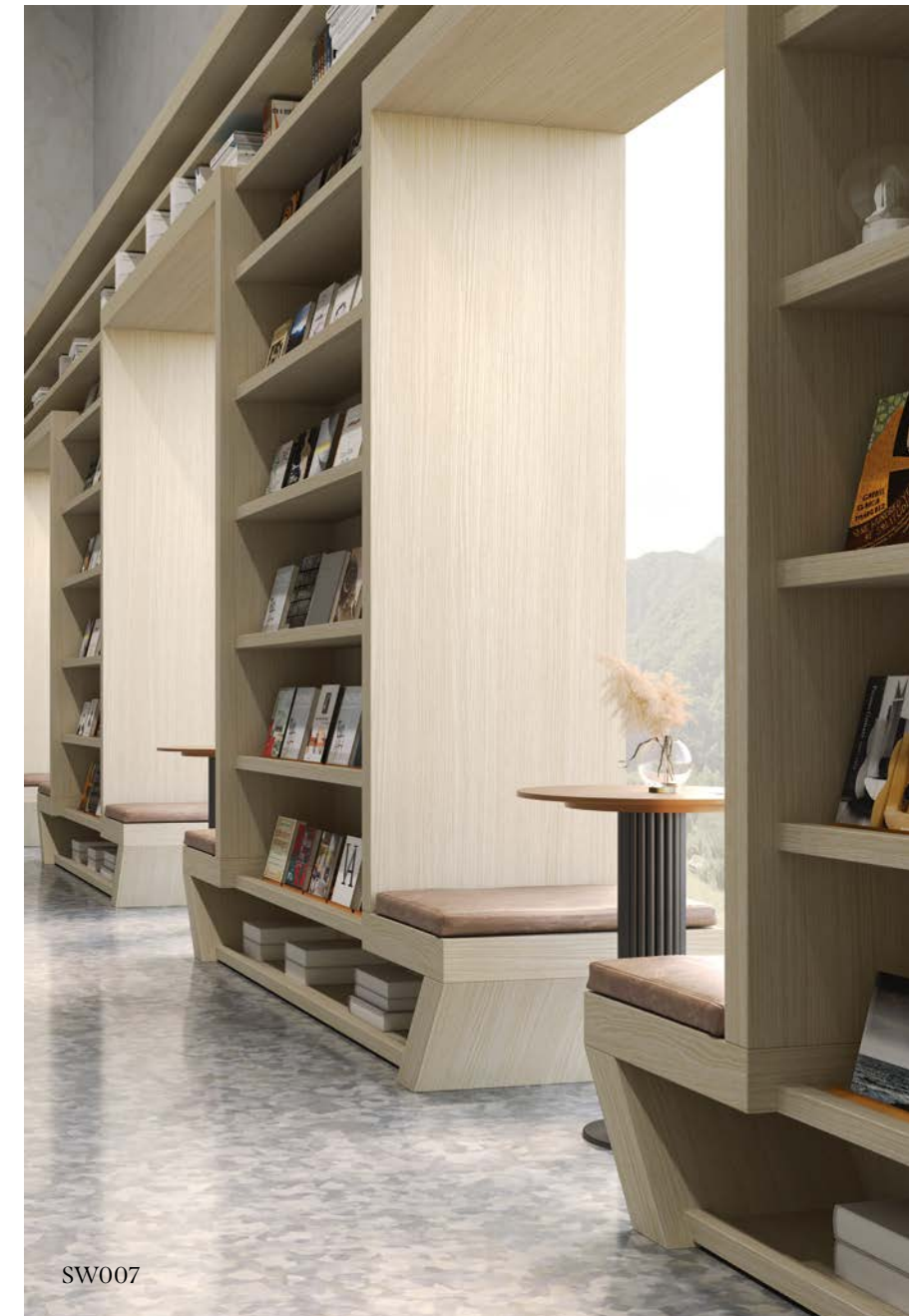
■ SW007



■ SW001



■ SW002



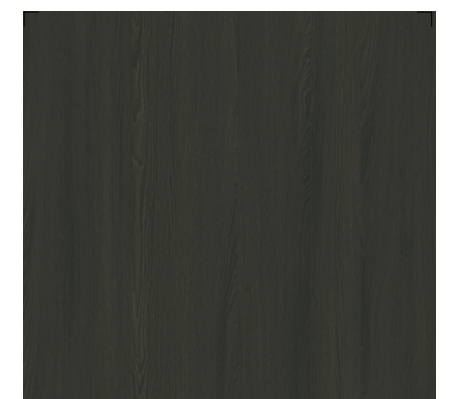
SW007



■ SW012



■ SW006



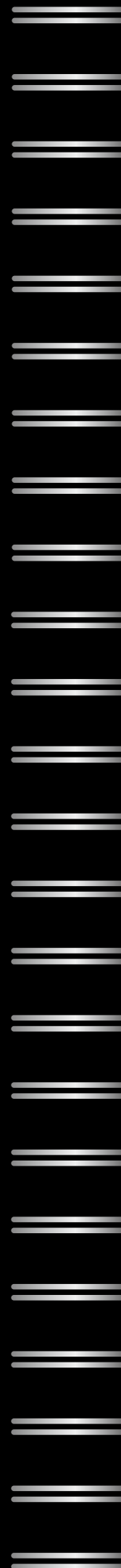
■ SW003

# Big Stone 빅스톤

빅 슬랩의 웅장한 마블링과 곧게 뻗은 크랙의 숨결을 느껴보세요.  
 Feel the majestic marbling of the big slab and the breath of straight cracks.



BM013 / BM015



BM013

Big Granite



BM015

Big Granite



BM019

Big Granite



BM016



86 X 72mm

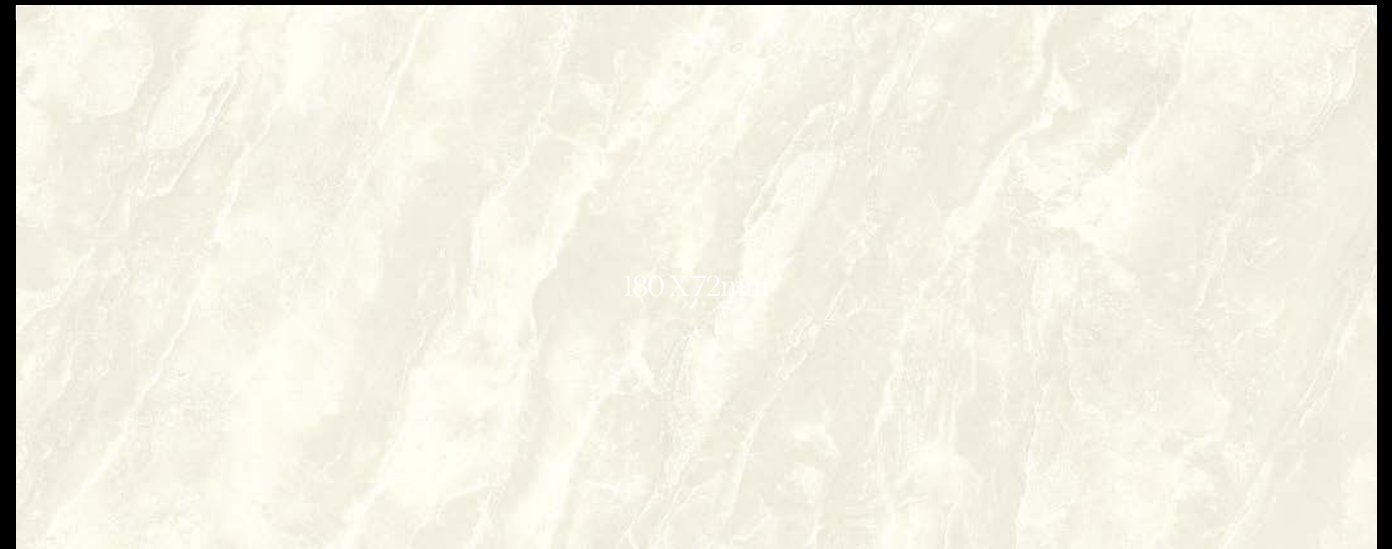
BM016

Big Travertine



BM017

Big Travertine



180 X 72mm

BM001

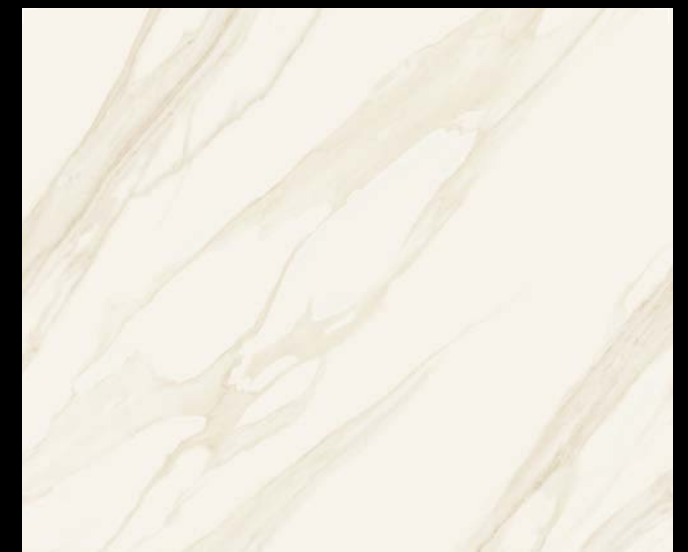
Light Marbling



86 X 72mm

BM007

Arabescato



BM008

Borghini



BM002

Marble



BM006

Marquina



# Big Stone 빅스톤



BM009 Galaxy Marble



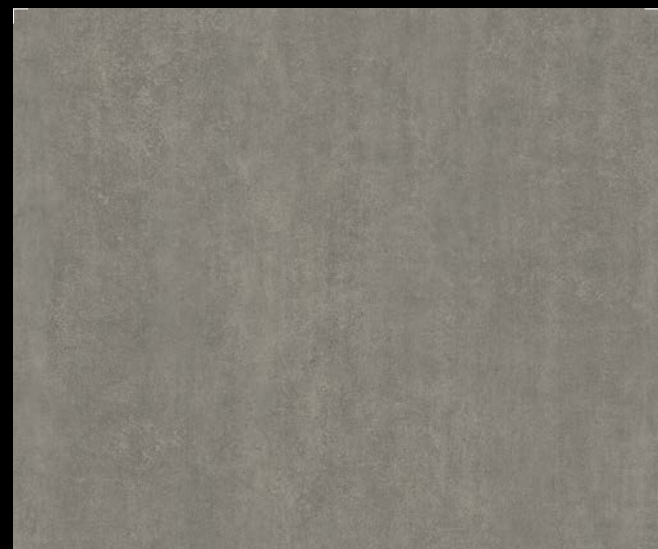
BM010 Galaxy Marble



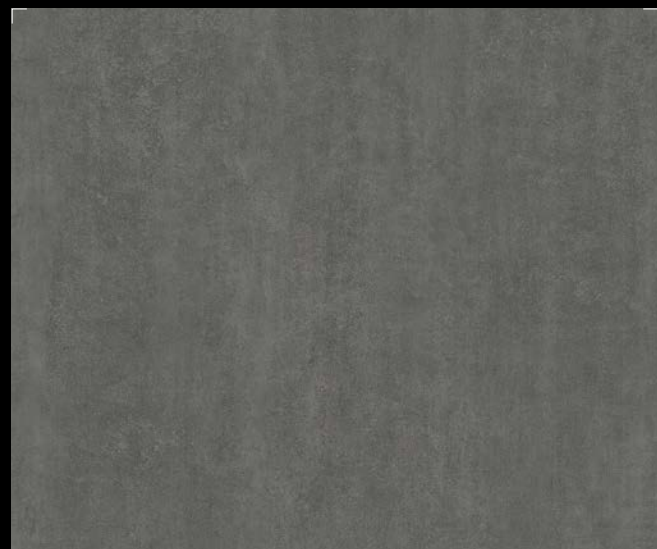
BM003 Gray Marble



BM004 Dark Gray Marble



BM011 Bulky Concrete



BM012 Bulky Concrete

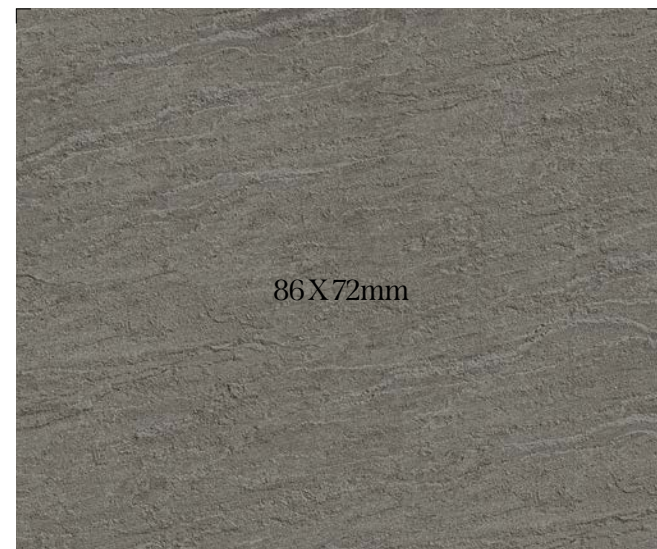
※ 상기 이미지 안의 제품 패턴과 색상은 실제 제품과 차이가 있을 수 있음을 알려드립니다.

# Stone 스톤

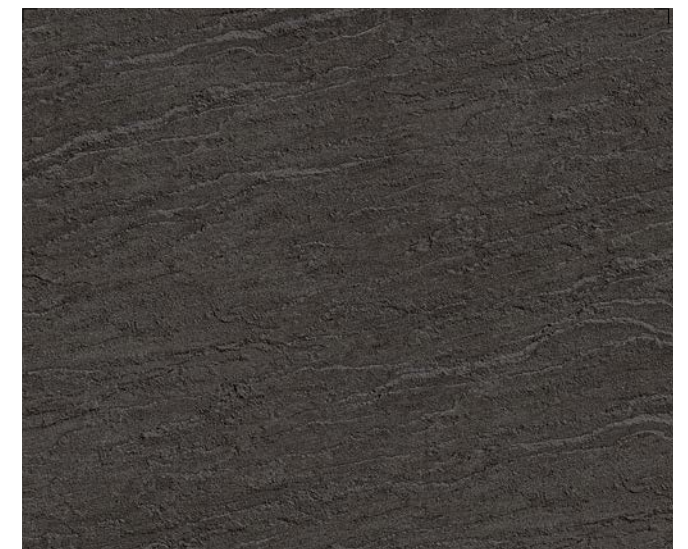
부드럽고 섬세한 컬러 위에 스톤의 느낌을 살린 터치감을 경험하세요.  
Experience the touch feeling of stone on top of soft and detailed colors.



NS006



NS006



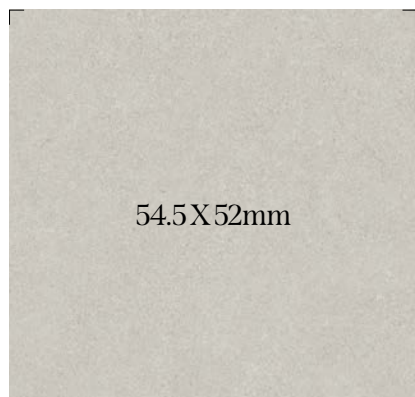
NS005

※ We notice that pattern and color of the product in the above image might differ from the actual product.

Stone 스톤



ML89



■ ML89

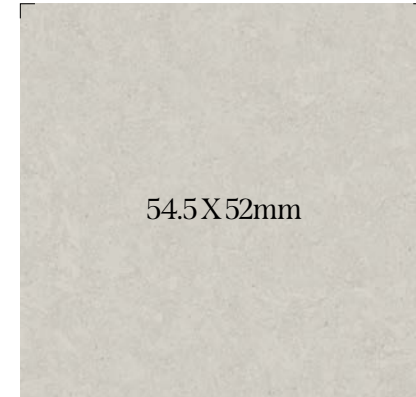
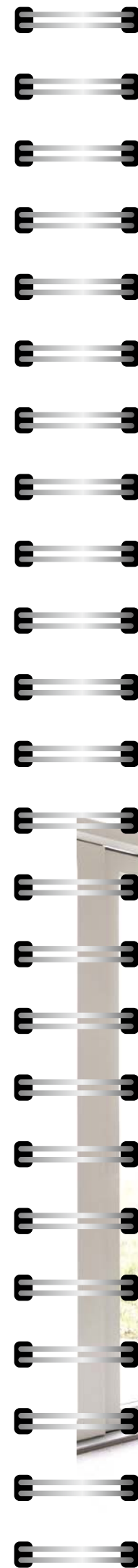


■ ML91



■ ML101

54.5X52mm



54.5X52mm

■ ML99



■ ML97



■ ML98



ML97

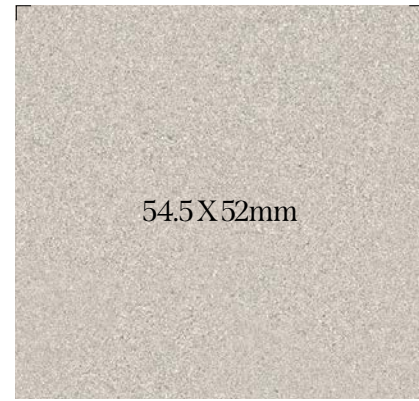
※ We notice that pattern and color of the product in the above image might differ from the actual product.

# Stone 스톤



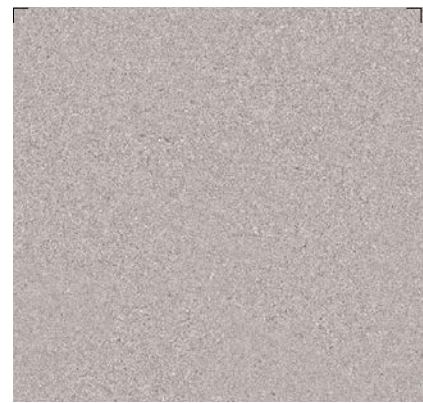
117.25 X 52mm

■ ML77

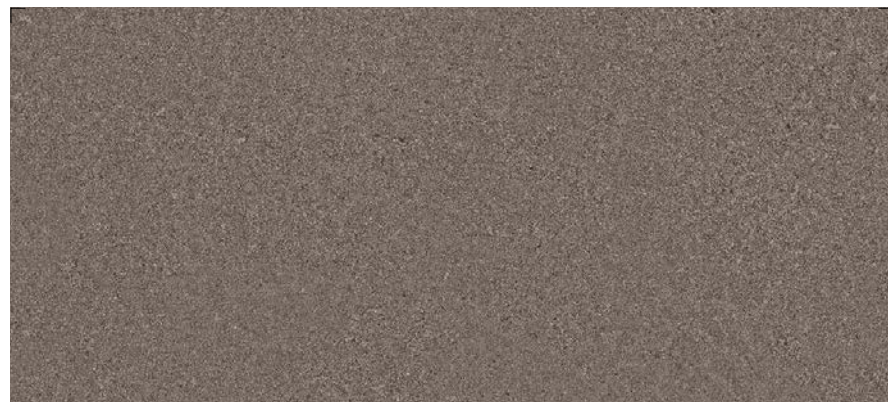


54.5 X 52mm

■ ML75



■ ML76



■ ML80



■ ML23



■ ML71



■ ML74



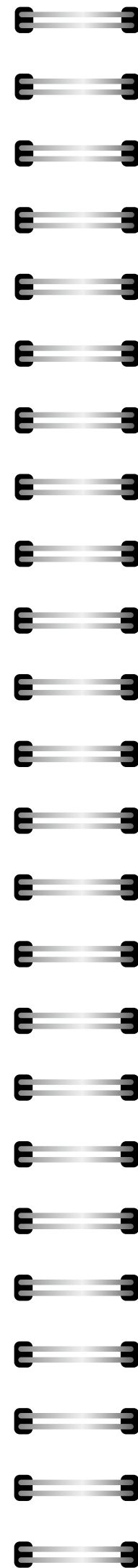
■ ML24



■ ML72



■ ML73



# Stucco 스타코

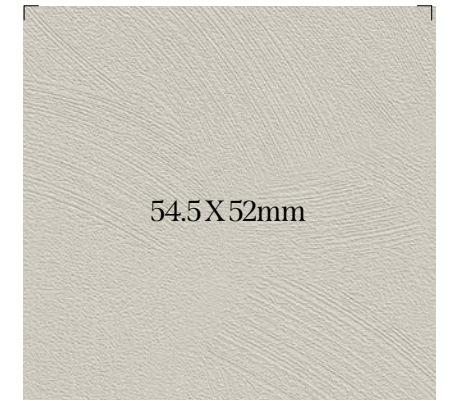
아트페인팅의 살아있는 터치감이 세련되고 고급스러운 분위기를 연출합니다.  
The alive touch of art painting creates a refined and luxurious mood.



■ MLS05

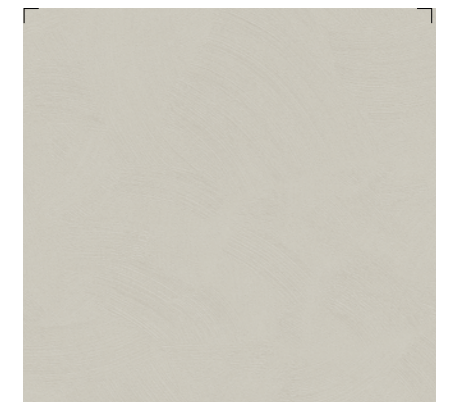


■ MLS02



54.5 X 52mm

■ MLS03



■ MLS01



■ MLS06



■ MLS04

※ We notice that pattern and color of the product in the above image might differ from the actual product.

# Concrete / Mortar 콘크리트 / 모르타르

가공되지 않은 거친 질감과 시크함으로 나만의 엔틱한 공간을 연출해 보세요.  
 Create your own antique space with unfashioned texture and chic.



■ ML92



■ ML93

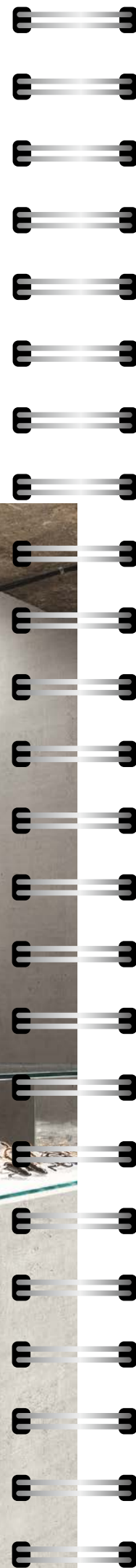


■ ML94

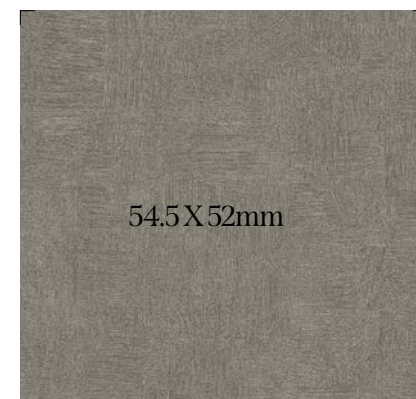


ML93

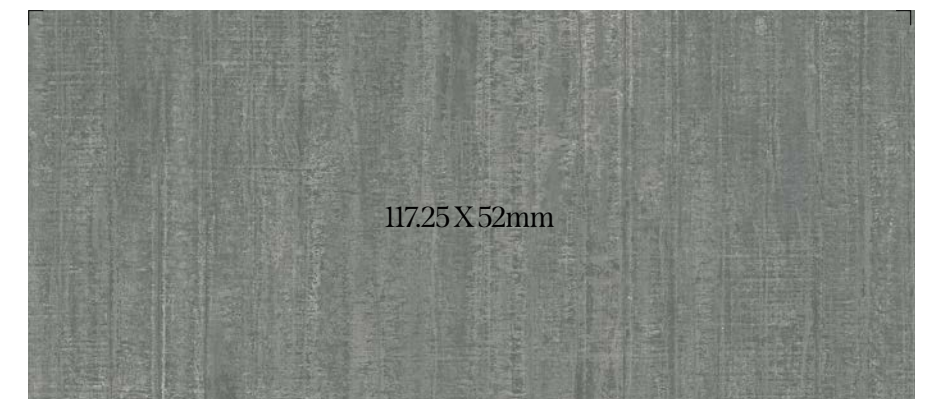
※ 상기 이미지 안의 제품 패턴과 색상은 실제 제품과 차이가 있을 수 있음을 알려드립니다.



ML22



■ ML64



■ ML22



■ EL178



■ EL177

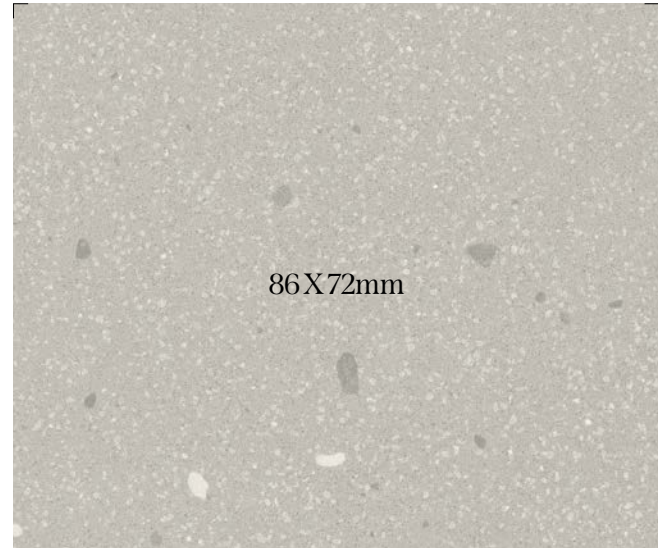


■ EL176

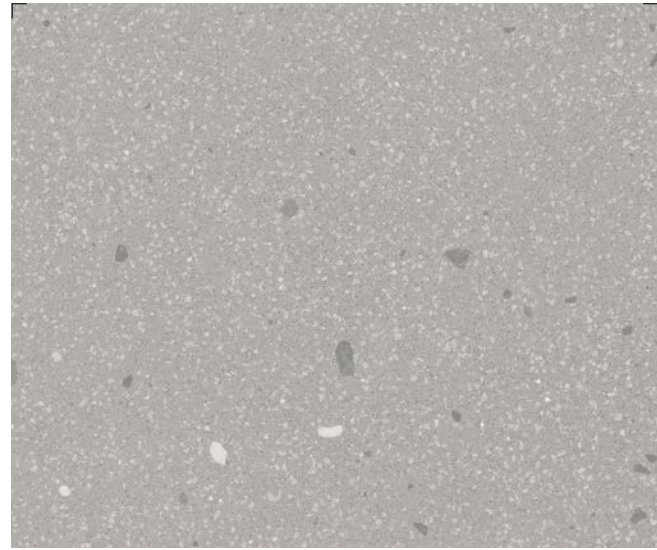
※ We notice that pattern and color of the product in the above image might differ from the actual product.

# Marble 마블

고급스러운 유럽풍의 대리석이 선사하는 아름다움과 깨끗함을 느껴보세요.  
 Feel the beauty and cleanliness of luxurious European-style marble.



■ ML96



■ ML95



ML95



ML56



■ ML67



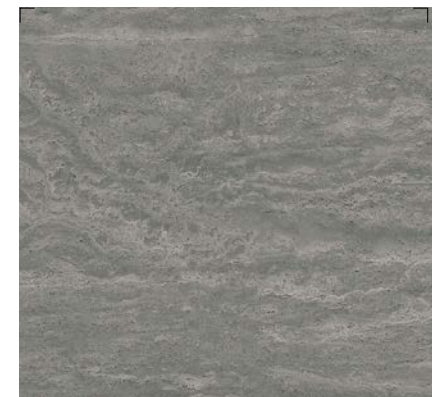
■ RM12



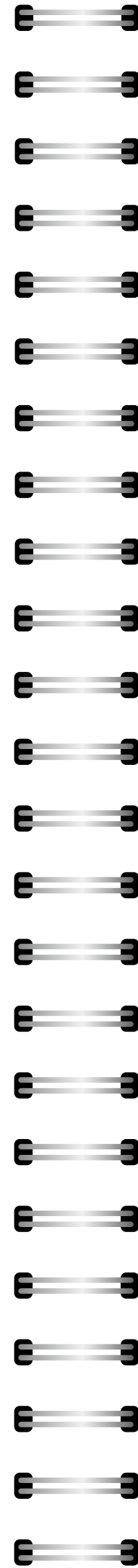
■ ML56



■ ML57



■ ML58



※ 상기 이미지 안의 제품 패턴과 색상은 실제 제품과 차이가 있을 수 있음을 알려드립니다.

※ We notice that pattern and color of the product in the above image might differ from the actual product.

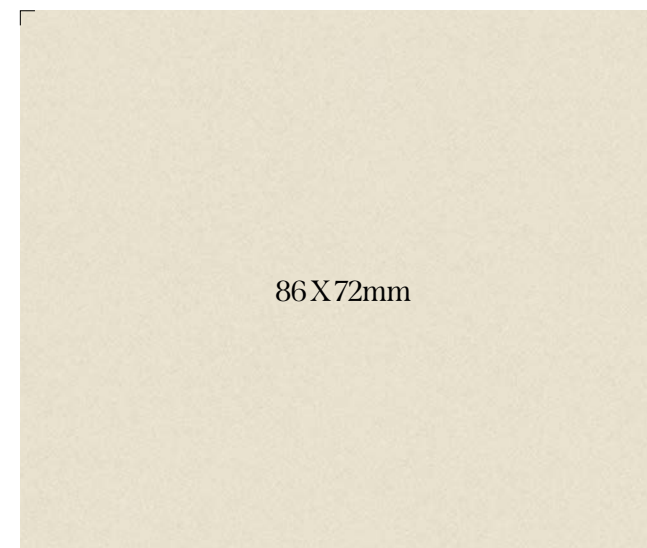
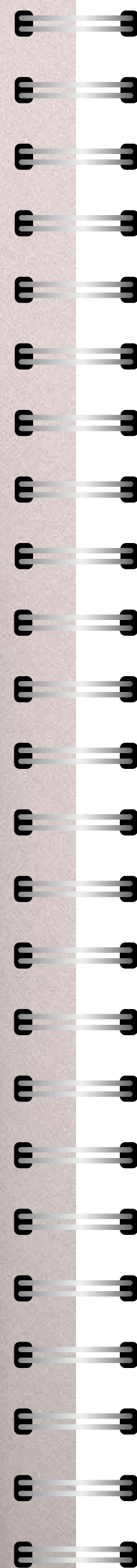
# Textile 텍스타일

다양한 색감이 깃든 섬세한 직물이 따뜻하고 포근한 공간을 안겨줍니다.  
*Detailed fabrics in various colors give a space warmly and snugly.*

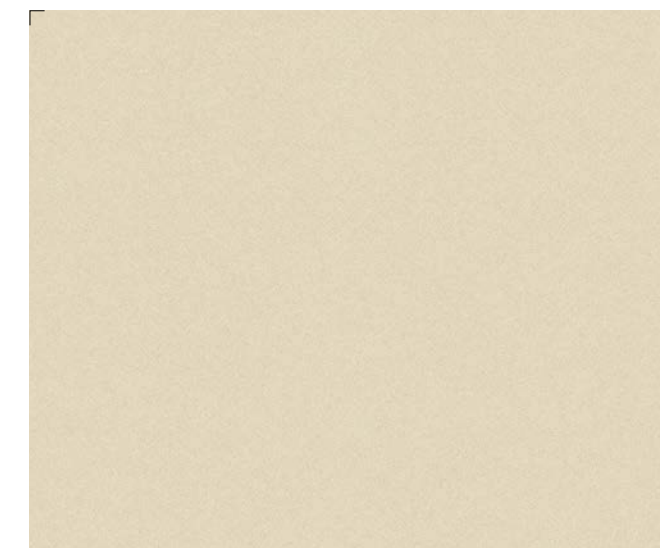


SF012 / SF014

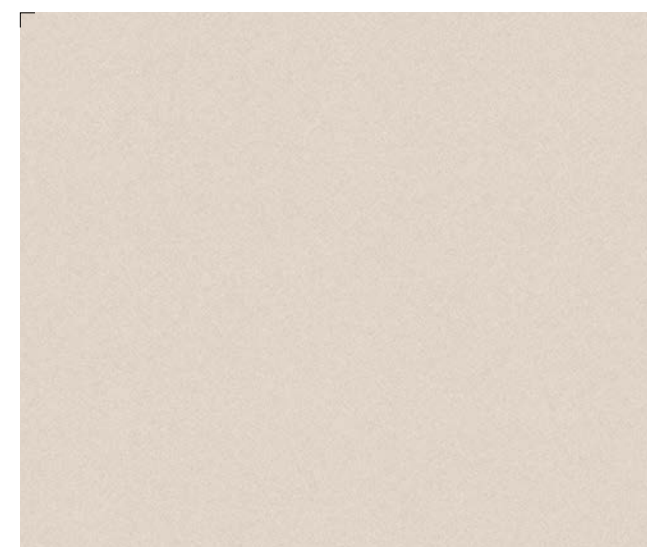
※ 상기 이미지 안의 제품 패턴과 색상은 실제 제품과 차이가 있을 수 있음을 알려드립니다.



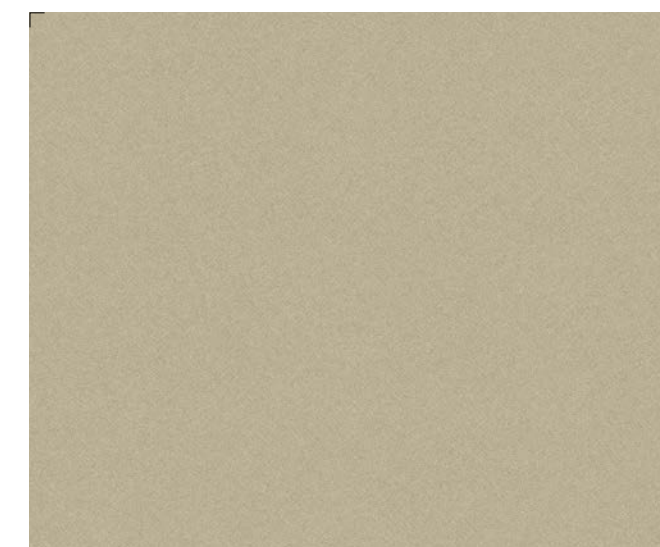
■ SF011



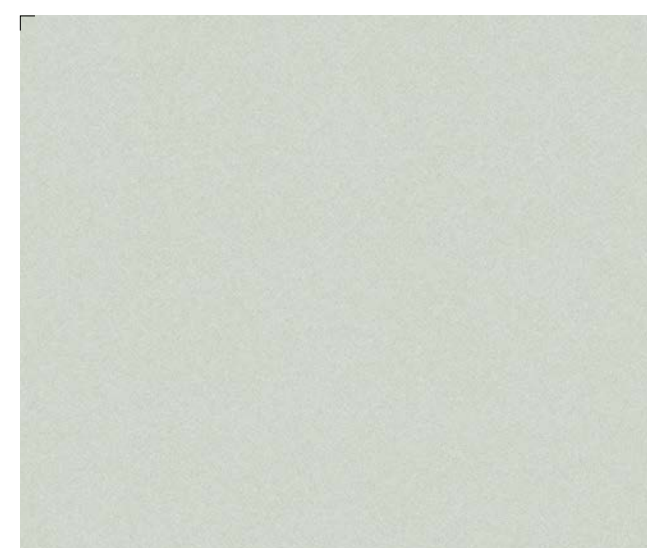
■ SF012



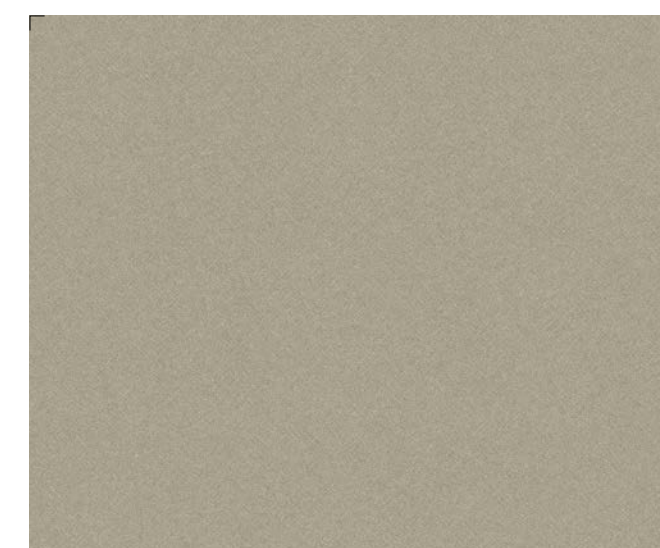
■ SF014



■ SF015

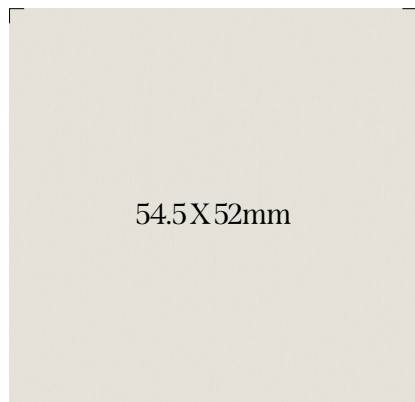


■ SF013

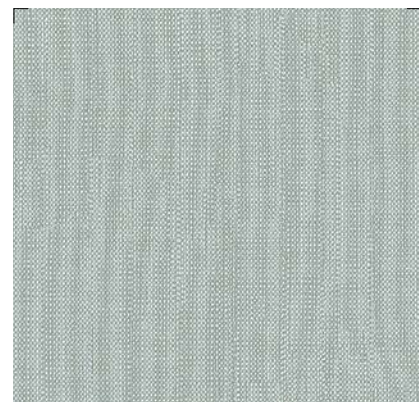


■ SF016

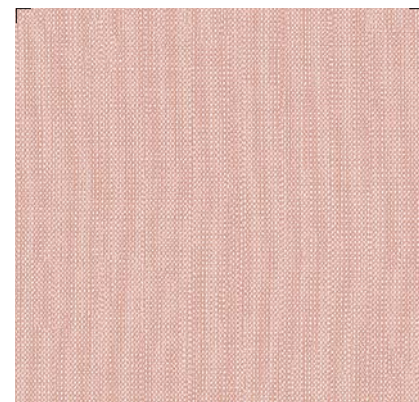
※ We notice that pattern and color of the product in the above image might differ from the actual product.



▪SF009



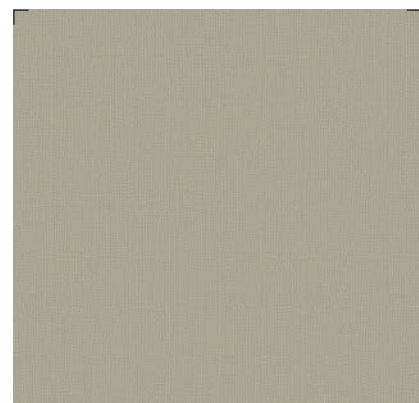
▪SF002



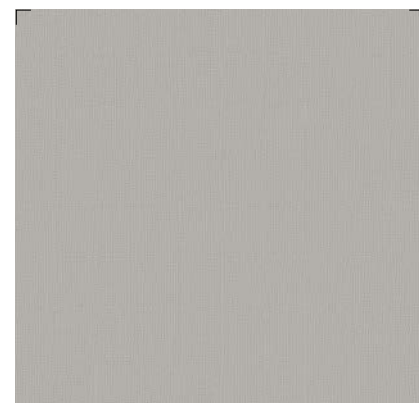
▪SF003



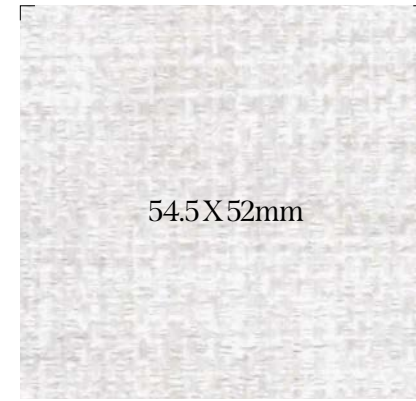
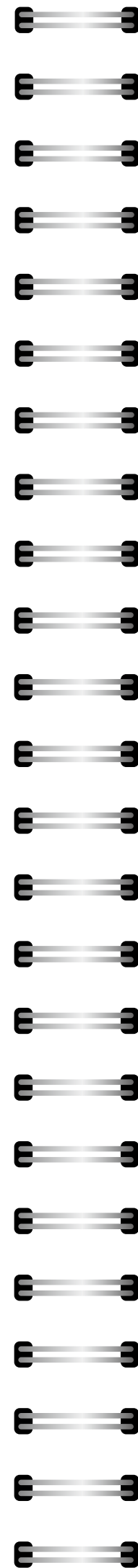
▪SF005



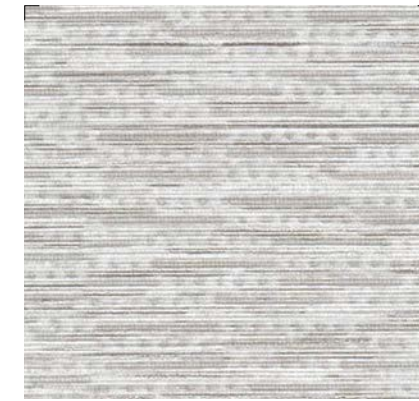
▪SF006



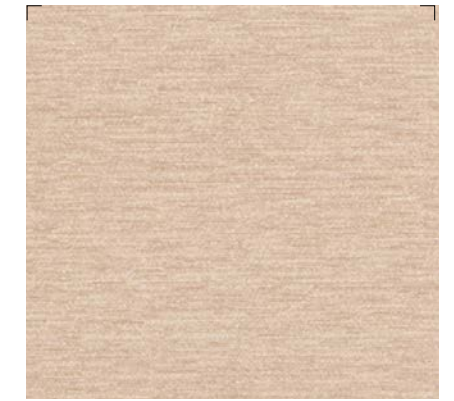
▪SF008



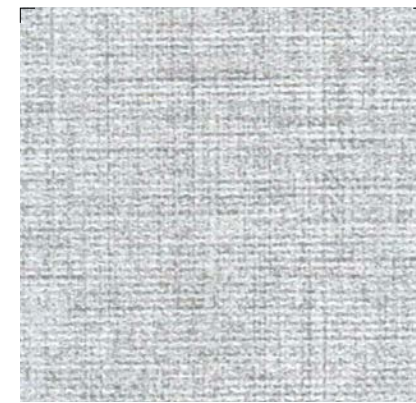
▪ML49



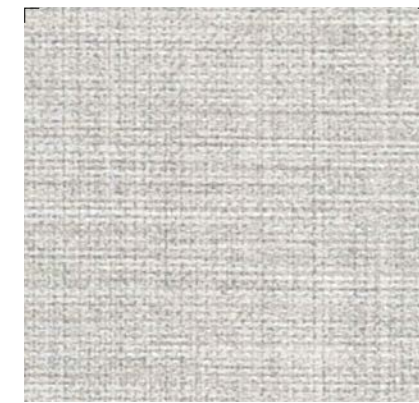
▪EL235



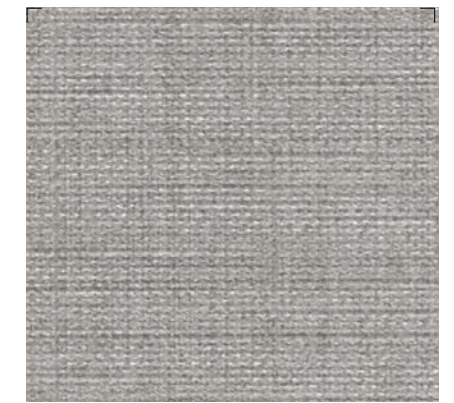
▪EL051



▪ML47



▪ML45



▪ML48



▪EL043



▪EL044



▪EL049



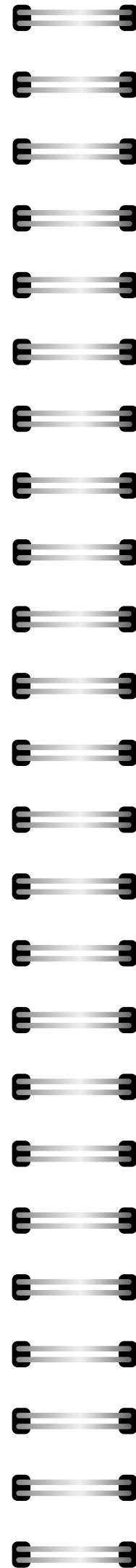
※ We notice that pattern and color of the product in the above image might differ from the actual product.

# Leather 레더

가죽만이 지닌 클래식하면서도 고급스러운 색상, 리얼한 터치감은 럭셔리 그 자체입니다.  
*The classic and luxurious colors and the realistic touch of leather are luxury itself.*



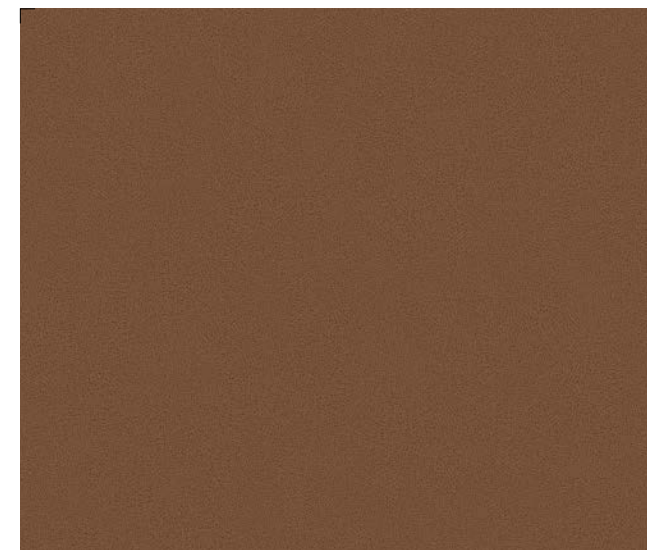
ML86



ML83



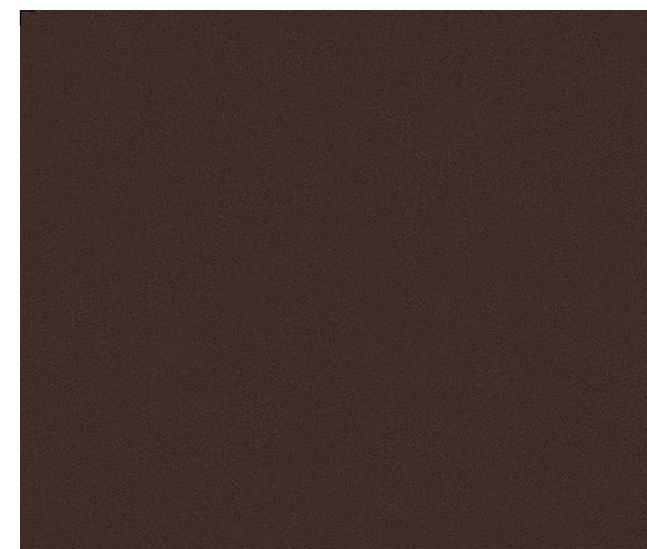
ML84



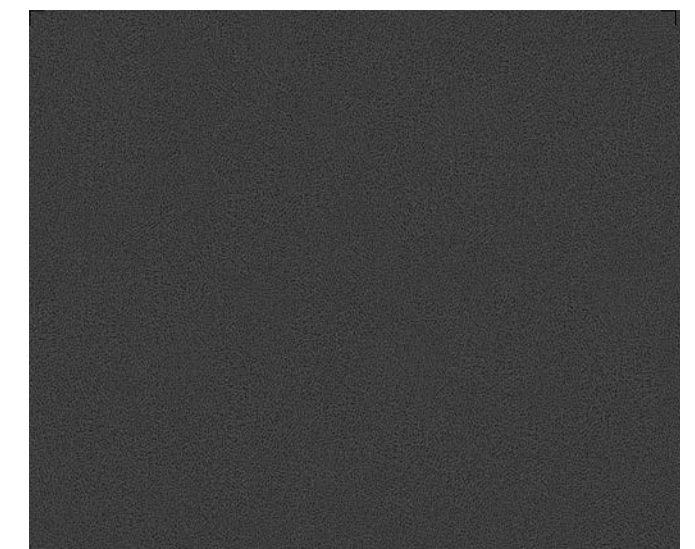
ML86



ML85



ML87



ML88

※ 상기 이미지 안의 제품 패턴과 색상은 실제 제품과 차이가 있을 수 있음을 알려드립니다.

※ We notice that pattern and color of the product in the above image might differ from the actual product.

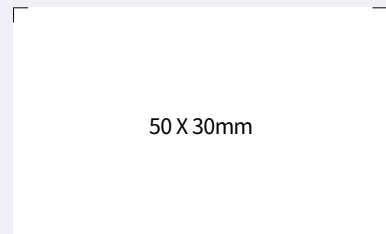


**철도차량용 인테리어필름**

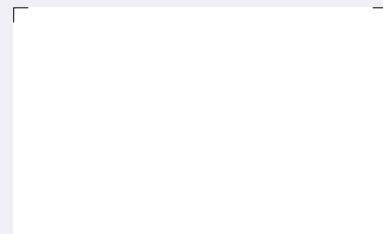
국토교통부에서 고시하고 있는 철도차량 기술기준에 따른 성능을 보유한 인테리어필름을 제공하며(철도차량 전용 컬러에 한함), KTX 및 SRT 실내 내장재로 사용되고 있습니다.

화재성능 요구기준	시험방법 시험규격	시험항목	내장판 화재안전기준			
			합격기준			
			위험등급[1]	위험등급[2]	위험등급[3]	위험등급[4]
내장판	ISO 5660-1	MARHE(kW/m <sup>2</sup> , @50kW/m <sup>2</sup> )	-	≤ 90	≤ 90	≤ 60
	ISO 5658-2	Qasb(MJ/m <sup>2</sup> )	≥ 1.2	≥ 1.2	≥ 1.5	≥ 1.5
	ISO 5658-2	CFE(kW/m <sup>2</sup> )	≥ 15	≥ 18	≥ 20	≥ 20
	ASTM E 662	DS(1.5min)	≤ 150	≤ 100	≤ 75	≤ 50
	ASTM E 662	DS(4.0min)	≤ 300	≤ 200	≤ 150	≤ 100
	ASTM E 662	DS(10min)	-	-	≤ 300	≤ 200
BS 6853 Annex B.2	독성지수(R)	≤ 3.6	≤ 2.7	≤ 1.6	≤ 1.6	

화재성능 합격기준(내장판)에서 가장 높은 위험등급인 4등급 성능



DFS03



DFP04

**해외 난연 인테리어필름**

**일본 불연**

LX하우시스 인테리어필름은 일본 국토교통성 건축자재 법규에 의거 불연 및 친환경(F☆☆☆☆)인증을 획득하여 판매되고 있습니다.

일본 불연인증서(일본 전용 컬러에 한함)



불연기재(석고보드 외) 포함 기준

알루미늄 기재 포함 기준

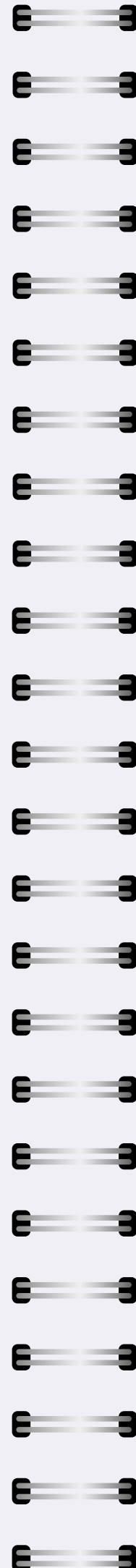
철판 기재 포함 기준



**중국 난연**

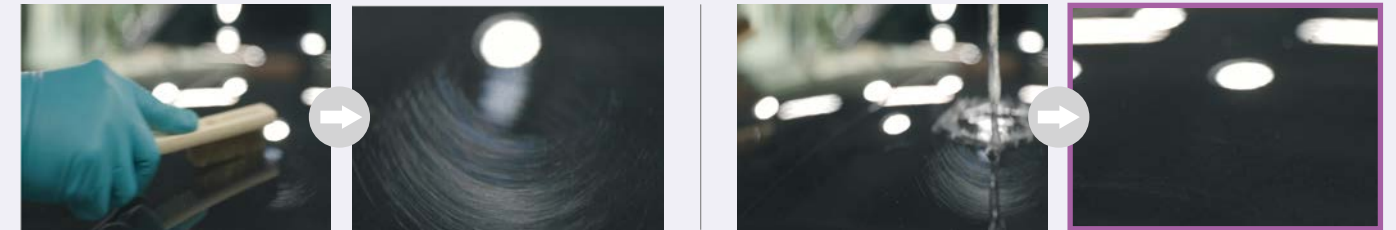
LX하우시스 인테리어필름은 중국 중화인민공화국 소방법 제 9조에 의거 준불연 등급(A2)을 획득하여 판매되고 있습니다.

중국 준불연 등급(A2) 성적서(중국 전용 컬러에 한함)



**Self-healing 인테리어필름**

생활 스크래치와 같은 외관 손상 발생 시 뜨거운 물(80°C ↑)이나 열풍을 통해 표면이 자가복원(Self-healing)되는 기술이 적용된 인테리어필름입니다.



스크래치 발생

뜨거운 물에 자가복원

※ 시험방법 : 표면에 \*Wire Brush로 스크래치를 발생시킨 후(15mm/min, 왕복 5회) 뜨거운 물(80°C ↑)을 붓고 물기를 제거하여 잔여스크래치 측정  
※ 자사 자체 시험결과 기준이며, 실제 사용환경이나 테스트 조건에 따라 차이가 날 수 있습니다.

* Wire Brush	
Model No.	Brass brush 4 lows
Wire diameter x hair length	φ0.14 x 16mm

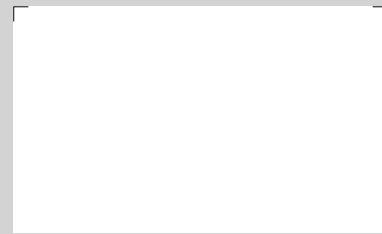
**실제로 체험해보세요.**

샘플 표면에 스크래치를 낸 뒤에 뜨거운 물로 닦으면 스크래치가 지워집니다.

※ 주의사항 : 과도하게 열에 노출 시 필름 변형에 의한 영구적 손상이 발생할 수 있습니다. (적정 표면온도 : 80 ~ 120°C)



White



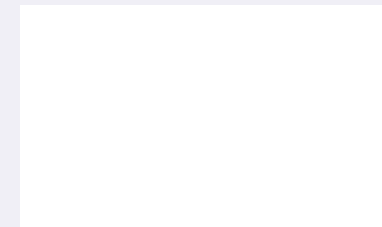
Black

※ 해당 제품은 제품 특성상 최소 주문 수량이 있으며, 구매를 원하시면 가까운 대리점으로 문의부탁드립니다.

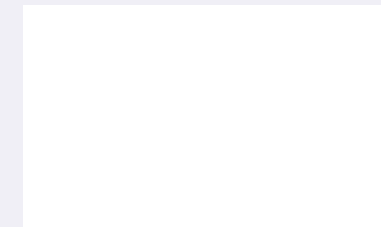
**Window Film**

휴게, 주거, 사무공간 등에 다양하게 활용 가능한 창문용 데코레이션 필름입니다.

**Windeco(PVC) \_ EP115, LC5510**



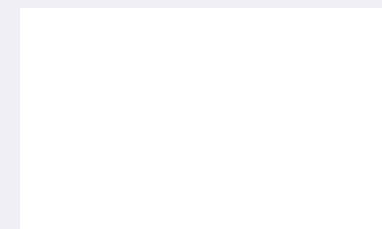
EP115



LC5510



**Windeco(PET)\_LC5601**



LC5601



※ 해당 제품 구매를 원하시면 가까운 대리점으로 문의바랍니다.

# Certification & Test Report 인증 & 성적서

## Fire Safety

화재 안전성



LX Z:IN 인테리어필름 BENIF 방염제품은 화재 발생 시 고객의 생명과 안전을 지키기 위해서, 국내 및 해외 화재 안전 공인시험을 통과하여 제품 안전성을 인정받고 있습니다.

### 실내 공간



한국소방산업기술원  
Korea Fire Protection Institute

#### 방염성능 검사

한국소방산업기술원에서 형식승인을 받은 방염제를 사용하여 제품을 생산하며, 생산 제품 중 방염성능 검사를 통과한 양품만을 방염인지 표시하여 판매하고 있습니다. (제품별 방염성능검사 합격 성적서 발급)



#### CE 인증

유럽연합(EU) 안전성 검증 규격입니다. 화재 전파 속도 뿐 아니라, 포름알데히드, 중금속 시험도 통과하여 유럽 내 유통하는 데 있어 제품의 안전성을 입증받았습니다. (인증번호 1121-CPR-KA5008, 방염 제품에 한함)



#### UL 화염 및 연기 확산 시험(UL723) 검사

글로벌 안전인증기관인 UL(Underwriters Laboratories)에서 화염 및 연기 확산 시험(UL723)을 실시하여 성능을 검증받고 성적서를 확보하였습니다. (성적서 번호 R26170)

## Eco-Friendly

환경 친화성



LX Z:IN 인테리어필름 BENIF는 고객 및 시공자 안전과 환경을 생각하여 인체 및 환경에 유해한 물질을 최소화하기 위한 노력을 꾸준히 하고 있으며, 친환경 제품으로 고객과 커뮤니케이션하고 있습니다.

### 인간 친화성



#### 친환경 건축자재 인증

건축자재의 유해물질을 측정하여 한국공기청정협회에서 제정한 친환경 건축자재 단체 표준인증 규정에 의거하여 검증한 시험 결과, 최우수 등급을 확보하였습니다. 단, 식품 접촉 시 안전성 여부는 검증되지 않았으므로 이 점 유의해주시기 바라며, 인증을 보유하지 않은 칼라가 있으니 인증서를 확인해주시기 바랍니다. (단체표준인증서 제 HB2679G22-01호)

#### 유럽섬유제품 품질 인증

제품/침구/완구/인테리어 자재 등 피부와 접촉이 일어나는 제품에 대해 약 200여 가지의 유해물질을 검증하는 인증으로, BENIF 일반형(솔리드) 제품은 업계 최초로 본 인증 1등급(Baby Class)을 획득하여 3세 미만의 영·유아 장난감 및 의류에 사용해도 되는 수준입니다. (인증번호 SE025 164519 TESTEX)

### 자연 친화성



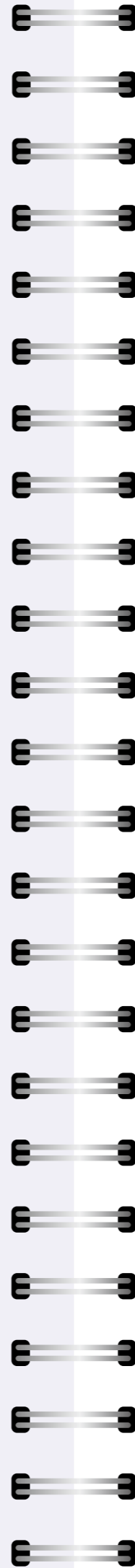
#### 환경성적표지 인증

제품의 원료부터 생산, 유통, 사용, 폐기 등 전 과정에 대한 환경 영향을 평가하여 환경 개선을 유도하는 제도로서, BENIF 우드(CW, DW, FW, SW)는 본 인증을 확보하여 지속적으로 환경 개선을 위해 노력하고 있습니다. (환경성적표지 제 2020-483호)



#### 저탄소제품 인증

탄소발자국 값이 최대허용탄소배출량(동종제품의 환경성적표지 탄소배출량의 평균값) 이하거나 최소탄소감축율 이상인 경우 한국환경산업기술원에서 인증하는 것이며, BENIF 솔리드(RS, RGM)는 본 인증을 확보함으로써, 환경 친화적인 제품으로 널리 사용되고 있습니다. (환경성적표지 제 2019-030호)



# 시공 유의사항

## 1. 사전 준비 작업

- 필름이 시공되는 피착재(MDF 등)의 종류와 상태를 확인하여 시공 시 문제가 발생될 수 있는지 사전에 점검해야 합니다.
  - MDF의 경우 밀도에 따라 시공 점착력의 차이 및 방염 성능의 차이가 발생하므로 밀도가 균일한 MDF를 사용하도록 합니다.
  - 도장면은 알코올로 표면의 오염물을 제거해야 하며 용제에 의한 도장면의 손상을 확인하고, 요철부위는 퍼티 처리 후 샌드페이퍼로 연마하고 이물질은 먼지떨이 붓으로 제거해야 합니다.
  - 철판류는 알코올, 락카시나를 이용하여 표면의 오염물질을 제거한 후 용접에 의한 요철부위는 퍼티로 처리하고, 샌드페이퍼로 표면을 연마한 후 이물질은 먼지떨이 붓으로 제거해야 합니다.
- 소비자가 선정한 제품의 이상 유무(때뎀명, 외관 상태 등)에 대해 사전 검사 작업을 해야 합니다.
- 필름 시공은 목 공사 후 도장 및 도배 전 단계에서 시행해야 합니다.

## 2. 표면 사전 작업

- 필름이 시공될 피착재(MDF 등)의 단면(절단)부위는 샌드페이퍼로 충분히 연마해야 합니다.
  - 특히 목재류(MDF, PB 등)의 경우, 꺾임 부위 및 메지 부분의 평활도가 중요하므로 반드시 사전 확인 후 표면 상태가 거친 경우에는 충분히 샌드페이퍼로 연마하거나 퍼티 처리 후 시공해야 합니다.

## 3. 프라이머 처리 (PM-04)

- 필름 시공 시 프라이머는 LX하우시스 전용 수성프라이머(PM-04)를 사용해야 합니다.
- 프라이머 처리 시 피착재 중 목재류(MDF, PB 등)의 절단면은 프라이머 흡수율이 높기 때문에 프라이머를 2~3회 도포할 수 있도록 합니다. 중복 도포는 먼저 도포한 프라이머가 완전히 건조된 후 실시합니다.
- 프라이머의 권장 희석비율과 건조시간은 아래와 같으니 참고해주시기 바랍니다.

	시기	월	프라이머	물	건조시간(권장)
수성프라이머와 물의 혼합비	동절기	12-3월	1	1	24
	춘추절기	4-5월, 10-11월	1	1.5	12
	하절기	6-9월	1	2	8

## 4. 시공 방법

- 필름 시공은 반드시 시방서의 시공 지침에 따라 시공해야 하며, 상세 사항은 시공매뉴얼을 참조하시기 바랍니다. (service.lxhausys.co.kr - 자료실)
- 시공 시 재단된 필름의 절단면이 최대한 보이지 않게 시공해야 합니다.
- 최대한 피착재가 보이지 않도록 필름 시공을 해야 합니다.
- 제품 Lot간 색상 차이가 발생할 수 있으므로 Lot를 구분하여 시공해야 합니다.
- 시공 전 72시간부터 시공 후 48시간까지는 현장 온도를 15~25°C로 유지해야 합니다. 동절기 시, 외부에 제품을 방치할 경우, 기온 하락에 따른 점착력 저하 현상이 발생할 수 있습니다.

## 5. 특정제품 시공 유의사항

- |            |                                                                                                                                                                                                                                               |
|------------|-----------------------------------------------------------------------------------------------------------------------------------------------------------------------------------------------------------------------------------------------|
| SW, EL     | <ul style="list-style-type: none"> <li>본 제품들은 표면 필름층이 없고 표면 처리만 되어 있는 제품이므로, 모서리부위를 양모펠트나 면장갑으로 강하게 문질러 꺾을 시, 인쇄층이 손상될 수 있으니 주의해서 사용해야 합니다.</li> <li>표면 처리층으로 인해 필름 겹침 시공 시, 슬립이 날 수 있으니, 수성프라이머 PM-04 원액을 도포 후 충분히 건조하여 시공해야 합니다.</li> </ul> |
| PME        | <ul style="list-style-type: none"> <li>부착면이나 점착면에 이물질이 묻은 상태로 시공할 경우, 이물질 부분이 표면으로 돌출되므로 주변 환경 청소와 부착면 샌딩 작업을 충실히 해주어야 합니다.</li> </ul>                                                                                                        |
| PW, SF, NS | <ul style="list-style-type: none"> <li>일반 제품에 비해 제품이 두껍고 엠보의 깊이나 형상이 다르므로 프라이머 처리 후 제품을 충분히 표면에 압착하여 붙여야 하며 꺾임 부위 및 겹침 부위 들뜸이 발생하지 않도록 더 많은 힘을 가해 마무리 해주어야 합니다.</li> </ul>                                                                    |

## 6. 기타 주의사항

- 필름 시공은 반드시 시방서의 시공 지침에 따라 시공해야 합니다.
- 시공 방법 및 피착재(MDF 등)에 관하여 시방서와 다른 류의 피착재에 시공할 경우, LX하우시스 및 대리점에 문의하여 시공 가능성을 확인해야 합니다.
  - 이크릴류 피착재에 시공 시 기포가 발생할 수 있으니 LX하우시스 및 대리점에 문의하여 확인 후 시공 바랍니다.
- LX하우시스 인테리어필름의 유통기한은 공장 생산일로부터 2년간 유효합니다. 보관 조건은 높은 온도, 습도를 피하여 주시고, 직사광선이 없는 곳에 보관해 주시기 바랍니다. 온도 20°C, 습도 50%가 가장 적합합니다.
- 이동 및 운송 시, 충격에 의해 제품이 깨질 수 있으니 던지지 마세요. (특히 동절기 각별히 주의)
- 이형지는 가공 및 보관 과정에서 열과 수분에 의해 수축 및 팽창이 일어나므로 이형지 눈금은 참조용으로 활용해주시기 바라며, 재단 시에는 부착면의 실측치보다 여유있게 재단해주시기 바랍니다.
- 엠보가 깊은 제품은 시공 시 겹침 부위에 점착제가 도포되는 면적이 적어, 더 강한 압착으로 부착될 수 있게 주의를 기울여야 합니다.

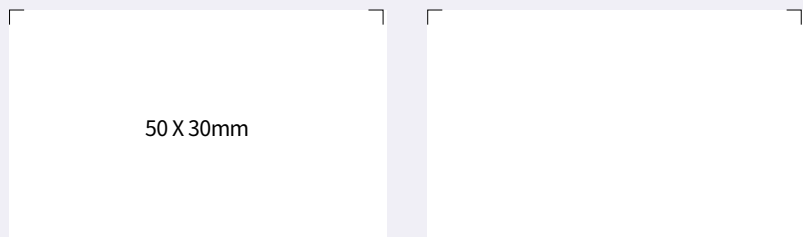
# Specialty

## Interior Film for railroad vehicle

We offer Interior Films that possess the performance required by the technical standards for railroad vehicles as announced by the Ministry of Land, Infrastructure and Transport(limited to colors specified for railroad vehicles), and these films are used as interior materials for KTX and SRT.

Inside Panel Fire Safety Standards						
Fire Performance Requirements	Test Method	Test Item	Passing Criteria			
	Test Standard		Hazard Level [1]	Hazard Level [2]	Hazard Level [3]	Hazard Level [4]
Inside Panel	ISO 5660-1	MARHE(kW/m <sup>2</sup> , @50kW/m <sup>2</sup> )	-	≤ 90	≤ 90	≤ 60
	ISO 5658-2	Qasb(MJ/m <sup>2</sup> )	≥ 1.2	≥ 1.2	≥ 1.5	≥ 1.5
	ISO 5658-2	CFE(kW/m <sup>2</sup> )	≥ 15	≥ 18	≥ 20	≥ 20
	ASTM E 662	DS(1.5min)	≤ 150	≤ 100	≤ 75	≤ 50
	ASTM E 662	DS(4.0min)	≤ 300	≤ 200	≤ 150	≤ 100
	ASTM E 662	DS(10min)	-	-	≤ 300	≤ 200
	BS 6853 Annex B.2	Toxic index(R)	≤ 3.6	≤ 2.7	≤ 1.6	≤ 1.6

Performance of Hazard Level 4, which is the highest Hazard level in the Fire Performance Passing Criteria(Inside Panel)



DFS03                      DFP04



## Flame Resistance Interior Films from oversea

### Japan non-combustible

LX Hausys Interior Film is being sold after obtaining non-combustible and eco-friendly(F☆☆☆☆) certifications based on Construction Materials Regulations from the Ministry of Land, Infrastructure,Transport and Tourism in Japan.

Japan non-combustible Certification(only for colors limited in Japan)



Inclusion standards other than non-combustible materials (gypsum board)      Inclusion standards including aluminum materials      Inclusion standards including steel materials



### China Flame Resistance

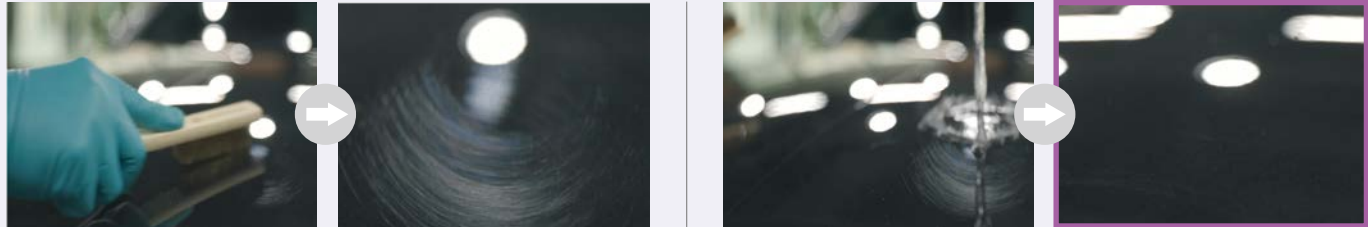
LX Hausys Interior Film is being sold after obtaining a semi non-combustible rating (A2) according to Article 9 of the Fire Service Act in the People's Republic of China.

China semi non-combustible rating(A2) Report(only for colors limited in China)



## Self-healing Interior Film

When the appearance of damage such as daily scratches occurs, this Interior Film is equipped with a self-healing technology where the surface is restored through hot water (80°C ↑) or hot air.



Scratch occurred

Self-healing in hot water

※ Test method: Scratches are generated on the surface using a \*Wire Brush (15mm/min, 5 reciprocations), and residual scratches are measured after pouring hot water (80°C or above) and removing moisture.

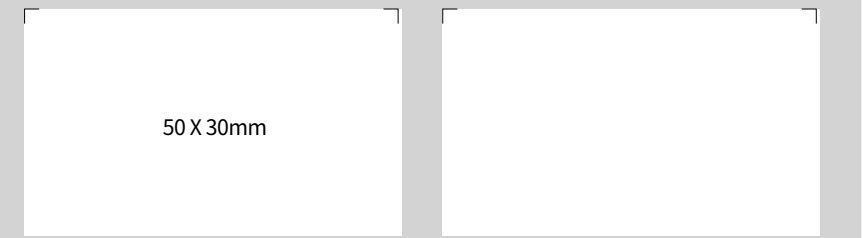
※ This is based on our own test results, and actual results may vary depending on the usage environment or test conditions.

* Wire Brush	
Model No.	Brass brush 4 lows
Wire diameter x hair length	φ0.14 x 16mm

### Please experience it in real life

After creating scratches on the sample surface, they can be removed by wiping with hot water.

※ Caution: Excessive exposure to heat may cause permanent damage due to film deformation. (Optimal surface temperature: 80 ~ 120°C)



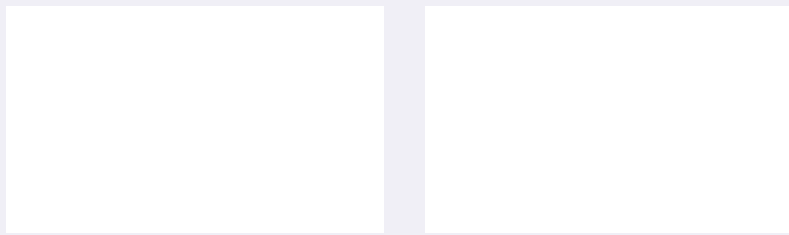
White                      Black

※ As a product feature, there is a minimum order quantity for this product. If you wish to make a purchase, please inquire at your nearest vendor.

## Window Film

This is a decorative film for windows that can be used in various settings such as relaxation spaces, residential areas, and offices.

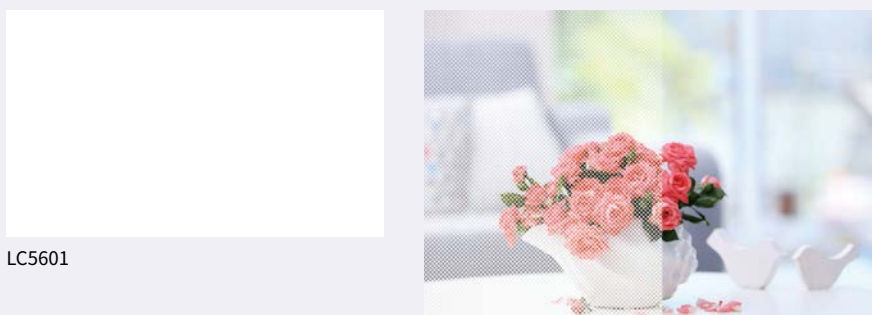
### Windeco(PVC) \_ EP115, LC5510



EP115                      LC5510



### Windeco(PET)\_LC5601



LC5601



※ If you wish to make a purchase, please inquire at your nearest vendor.

# Certification & Test Report

## Fire Safety



To keep the safety and life of our customers in case of a fire, LX Z:IN Interior Film BENIF flame retardancy product is considered to be commendable for product stability by passing domestic and international fire safety certifications.

### Interior space



#### Flame Retardancy Test

We manufacture our products using fire retardants that have been approved by Korea Fire Equipment Inspection Corporation, and only sell those items that have passed the flame retardancy test and then indicate the fire retardant label. (Each product being issued with the flame retardancy test report that has passed the test.)



#### CE Certification

It is the stability verification standard of European Union(EU). The product's stability within the European market has been substantiated by passing not only the flame spread rate test but also formaldehyde and heavy metal tests. (Certification Number 1121-CPR-KA5008, limited to flame retardancy product)



#### UL flammability and smoke diffusion test(UL723) examination

Our product's performance has been verified via flammability and smoke diffusion tests(UL723) conducted by the global safety certification organization UL(Underwriters Laboratories). After that, we have obtained the test report. (test report number R26170)

## Eco-Friendly



LX Z:IN Interior Film BENIF is making steady efforts to minimize substances harmful to the human body and the environment, considering the safety of customers and contractors and the environment, and communicating with customers with eco-friendly products.

### Human affinity



#### Eco-Friendly construction materials certification

We have tested and verified the harmful substances in building materials, according to the certification standards for eco-friendly building materials established by the Korea Air Cleaning Association. As a result of the testing, we have obtained the highest grade. However, please note that the safety of these materials in contact with food has not been verified. Also, there are some colors that have not been certified, so please check the certification document for more information. (Group Standard Certification No. HB2679G22-01)



#### The European textile product quality certification

This certification verifies the absence of approximately 200 harmful substances in products that come into contact with skin, such as general products, bedding, toys, and interior materials. BENIF's **General (solid)** products were the first in the industry to obtain the 1st grade certification (Baby Class) under this standard, which confirms their suitability for use in clothing and toys for infants and toddlers under 3 years of age. (Certification No. SE025 164519 TESTEX)

### Nature affinity



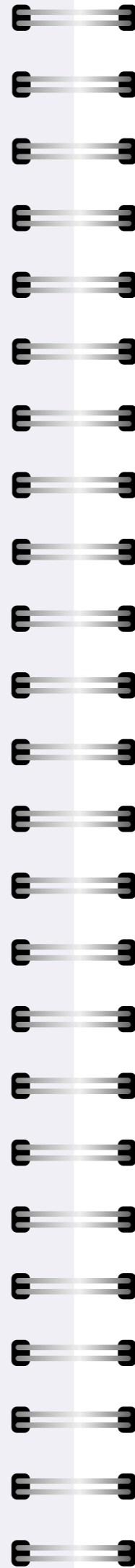
#### Environmental Product Certification

It is a system that evaluates the environmental impact of the entire process, including raw materials, production, distribution, use, and disposal of certified products, and encourages environmental improvements. BENIF **Wood (CW, DW, FW, SW)** has obtained this certification and is continuously striving for environmental improvement. (Environmental Product Certification No. 2020-483)



#### Low Carbon Product Certification

If the carbon footprint value is equal to or less than the maximum allowable carbon emissions (average carbon emissions of environmentally friendly labeled products of the same type), or if the minimum carbon reduction rate is achieved, it is certified by the Korea Environmental Industry & Technology Institute. BENIF **Solid (RS, RGM)** has obtained this certification and is widely used as an environmentally friendly product. (Environmental Product Certification No. 2019-030)



# Installation Instructions

## 1. Preliminary Work

- It is necessary to check the type and condition of the adherend(MDF, etc.) on which the film is applied to see if any problems may occur during installation.
  - In the case of MDF, it is recommended to use MDF with uniform density, as the difference in installation adhesion and flame retardant performance occurs depending on the density.
  - The painted surface should be cleaned with alcohol to remove contaminants and checked for damage by the solvent. The uneven areas should be polished with sandpaper after putting treatment and foreign matters should be removed with a dust brush.
  - For iron plates, after removing contaminants from the surface with alcohol or lacquer, the uneven areas caused by welding should be treated by puttying. Foreign matters should be removed with a dust brush after polishing the surface with sandpaper.
- It is necessary to perform preliminary inspection on whether the product selected by the consumer has defects. (pattern name, appearance, etc.)
- Film installation should be carried out after carpentry work and before painting and wallpapering.

## 2. Surface Pre-work

- The cross-section(cutting) part of the adherend(MDF, etc.) where the film will be applied must be sufficiently polished with sandpaper.
- In particular, in the case of wood(MDF, PB, etc.), smoothness of the bent and joint parts is important. Therefore, if the surface condition is rough after inspecting in advance, it must be sufficiently polished with sandpaper or putty treatment before installation.

## 3. Primer Treatment (PM-04)

- When applying the film, LX Hausys proprietary water-based primer (PM-04) must be used.
- For the primer treatment, the cut surface of wood(MDF, PB, etc.) among the adherends has a high primer absorption rate, so the primer should be applied 2-3 times. Overlapping is done after the primer applied before has been completely dried.
- Please take note of the recommended dilution ratio and drying time for Primer as provided below.

Ratio of mixing water and water-based primer	Time	Month	Primer	Water	Drying time (recommended)
	Winter season	December - March	1	1	24
Spring and Autumn season	April - May, October- November	1	1.5	12	
Summer season	June - September	1	2	8	

## 4. Installation Methods

- Film installation must be carried out in accordance with the installation guidelines in the specification sheet, and for further details, please refer to the installation manual.(service.lxhausys.co.kr - reference)
- During installation, the cut surface of the film should not be visible as much as possible.
- Film should be applied in a way that the substrate is not visible as much as possible.
- Color differences may occur between product lots, so it is necessary to sort the lots for installation.
- The site temperature should be maintained at 15~25°C from 72 hours before installation to 48 hours after installation. In winter, if the product is left outside, adhesion may decrease due to a drop in temperature.

## 5. Installation Instructions for Specific Products

- |                   |                                                                                                                                                                                                                                                                                                                                                                                                                                                                                                  |
|-------------------|--------------------------------------------------------------------------------------------------------------------------------------------------------------------------------------------------------------------------------------------------------------------------------------------------------------------------------------------------------------------------------------------------------------------------------------------------------------------------------------------------|
| <b>SW, EL</b>     | <ul style="list-style-type: none"> <li>These products do not have a surface film layer but only do surface treatment. If you strongly rub the corners with wool felt or cotton gloves, the printed layer may be damaged, so please use our product carefully.</li> <li>Due to the surface treatment layer, it may slip when film is overlapped. Therefore, the installation should be done after applying the water-based primer PM-04 undiluted solution and drying it sufficiently.</li> </ul> |
| <b>PME</b>        | <ul style="list-style-type: none"> <li>When applying the film to a surface with foreign substances or contaminants, those substances may protrude from the surface and negatively affect the film's adhesion. Therefore, it is essential to thoroughly clean the surrounding environment and perform sanding work on the adhesive surface to ensure optimal adhesion.</li> </ul>                                                                                                                 |
| <b>PW, SF, NS</b> | <ul style="list-style-type: none"> <li>When installing products that are thicker and have a different depth or shape of embossing than regular products, it is necessary to apply sufficient pressure to attach the product to the surface after primer treatment. Also, it is important to apply more force to the folding and overlapping areas to prevent any lifting.</li> </ul>                                                                                                             |

## 6. Other Precautions

- Film installation must be carried out according to the installation standards of the specification.
- For installation methods and adherends(MDF, etc.), in case of the installation on a different type of adherend from the specifications, you must contact LX Hausys or a vendor to confirm the possibility of installation.
  - Air bubbles may occur during installation on acrylic adherends, so please check with LX Hausys or a vendor before installation.
- The shelf life of LX Hausys Interior Film is valid for two years from the date of factory production. Please store the product in a place without high temperature and humidity and avoid direct sunlight. The ideal conditions for storage are 20°C temperature and 50% humidity.
- When moving or transporting the product, please avoid dropping it as the product may break due to impact (especially during the winter season).
- Please be advised that release paper may undergo contraction or expansion during processing and storage due to the impact of heat and moisture. Consequently, we recommend utilizing release paper measurements as a point of reference, and when cutting, we suggest providing extra margin beyond the actual dimensions of the adhering surface.
- For products with deep embossing, special attention should be paid during installation to ensure sufficient adhesion through stronger pressure, as the area of adhesive installation on overlapping parts may be reduced.